



ကယီကယီ | Gyaw Gyaw
ANNUAL REPORT 2019

TABLE OF CONTENTS



Gyaw Gyaw 2019	Page 3
Gyaw Gyaw Noh Bo team	Page 4
Gyaw Gyaw architects and project management	Page 5
Gyaw Gyaw board of directors	Page 6
Report	Page 7
Report: Line Ramstad, board leader	Page 7
Report: Paw Eh Wah, manager	Page 10
How we work	Page 11
The year of 2019	Page 12
Projects and numbers	Page 14
Kitchen and dining room for Teacher Training College (TTC)	Page 15
Roof for Ka Ta Primary school	Page 16
Dormitory for Gaw La Heh Primary school	Page 17
Process and implementation	Page 18
Classroom II for Klay Poe Klo Primary school	Page 22
Process and implementation	Page 23
Classroom I for Kle Mo Kee Primary school	Page 26
Process and implementation	Page 27
Improvements and repairs	Page 32
Results and Budgets	Page 34
Support	Page 36
Prospects 2020	Page 37



Gyaw Gyaw extended team 2019:

From left: Ste Pha (carpenter), Pah Da (Trainee), Line Ramstad/Nee Ga Mwee (leader of the board, architect, project manager), See Da Pah (leader of building site), Pah Me (detail carpenter), Paw Eh Wah (leader), Phillipa (social responsibilities), Daniel Evensen (architect), Kee Kee Pah (economic responsibility on building site), Paw Rah Mo (leader assistant, teacher trainer, administrator on building site), Jae-Young Lee (architect). Not in picture: Saw Dee (driver/organizer).

2019 marks the 10th year since Gyaw Gyaw was founded. It has been 10 fruitful years where we have both developed our projects and our organization in a sustainable and democratic manner. We are still the same core team as when we started the organization together back in 2009 and with more than 70 projects implemented, we can proudly say we have found a great way to use architecture as a tool for sustainable development.

Our 10 years anniversary has been celebrated with a thorough evaluation of the years behind us, plans for the future and clarification of methods and frames for our work. We are now starting 2020 with an updated strategy, adjusted contracts for team members, trainees, day labor and project owners and a system for pension for our long-term team members. An education fund to support the teams' children, grandchildren and other talented villagers that have been accepted into higher education, is also being implemented.

It's all made possible through the longterm support from our dedicated sponsors. We are incredibly grateful for HENT and Asplan Viak that have been our main sponsors and supported us consistently since 2009. Vestre AS also joined the team this year and we are excited to have them on board. In addition to our long-term sponsors, Agraff AS has supported us with annual donations based on their surplus and completed 2019 with a most generous donation. Rotary and BAIAS have also been supporting us regularly and so have a few private donors that know us well. THANK YOU! We could not have done this without you.



Gyaw Gyaw Noh Bo team



See Da Pah, leader of buildingsite.



Pah Me, detail carpenter.



Saw Dee, driver/organizer.



Paw Eh Wah, manager.



Phillipa, social responsibilities.



Phaw Reh Mo, assistant, reporting, teacher trainer.



Ste Pha, carpenter.



Kee Kee Pah, economic responsibilities.



Pah Da, trainee.

The team in Noh is under sturdy leadership of **Paw Eh Wah**. In addition to the daily operations keeping the team and the projects going, her roles also include research for possible future projects and following up with the projects already completed. With Line Ramstad now well established in Norway and the architects Jae-Young Lee and Daniel Evensen also included from abroad, Paw Eh Wah is also the bridge between the team and the designers and holds the position of project manager on site.

To support her, and also ease the communication outwards, **Phaw Reh Mo** has become a new member of our team. She is a trained teacher, and her presence on building site is also supporting the teachers in their daily work. With the exception of Kle Mo Kee, where TTC school is running the school, most of the school teachers have no education besides of primary school. Phaw Reh Mo's position has also increased the collaborations within the team and with the villagers on site. It has lifted the general level of understanding of drawings and made it easier for everyone to participate in decision-making, which gives more support to See Da Pah's solid leadership on site.

The level of work implemented by Pah Me, Phillipa, Kee Kee Pah, Ste Pha, Saw Dee and Pa Da has also been extraordinarily good, and if we keep this level of development for the years to come, the future looks bright.



Line Ramstad, founder/architect/project leader, Paw Eh Wah, leader, Jae-Young Lee, Architect, Daniel Evensen, Architect

Gyaw Gyaw's architectural team is now well established and for 2019, we have finally also designed a project together. Kle Mo Kee school already consists of small pavilions in a lush valley and with the need of three new classrooms to be designed and built, we decided to create a common framework within which each architect designed a classroom.

It was a fruitful and rewarding collaboration and the first classroom, designed by Daniel Evensen, is presented in this report. Jae-Young Lee and Line Ramstad has also designed one classroom each. These will be built in 2020.

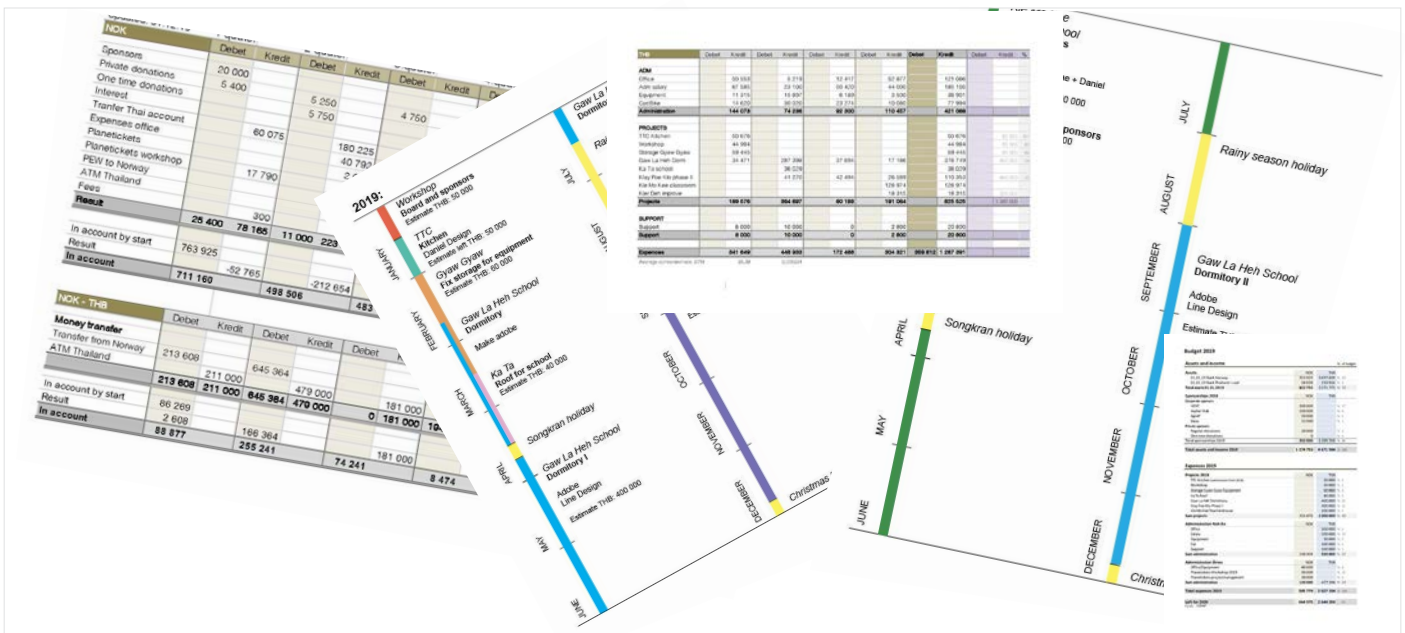
The architectural collaboration has to a bigger extent also contributed to further development within the team.

Where Line has lived in the area since 2009 and knows the climate, landscape, culture and traditions. Jae and Daniel do not have the same established view. They both have a good understanding of life on the border and work very well within Gyaw Gyaw's established frames, but where Line has lived on site and been very careful not to push the limits too far, the distance gives them the opportunity to sometimes deliberately, sometimes undeliberately, challenge Gyaw Gyaw's established design solutions.

The essential part of this is that the trust and respect built through years of careful work in the same area is not challenged and with this agreement, Jae and Daniels gentle push is either making a change or it is forcing the rest of us to rethink and put into words why we do as we do.

Paw Eh Wah's role as the connecting link has therefor been extremely valuable. She is guiding the process and has the last word and are making sure we do no harm.

Gyaw Gyaw board of directors



The board is keeping control with our economics and are making sure we do not start projects we can not finance. They are also overlooking our plans and contributing with thorough questions to make sure we are moving in a good and wanted direction. The board also connects our work to the outside world and make sure we are utilizing our knowledge in a good manner.

After four years in the board, Linn Beathe Hæreid has been replaced by architect Solveig Dahl Grue. Linn Beathe Hæreid has been an important contributor to Gyaw Gyaw throughout the organization's existence and played a crucial role in the transition phase in 2016/2017. We are grateful for Linn Beathe's valuable contribution to the organization and exited to have Solveig on board. Line Ramstad and Christine Riiser Wist are continuing as before.

Solveig Dahl Grue is a trained architect and has extensive experience from various aspects of the field of architecture. She has practiced as an architect in private offices, worked with project management of prestigious projects through Oslo Municipality, been responsible for development at Arkitektbedriftene in Norway, and project manager in the early phase at Statsbygg. She is now the leader of Ratio Architects in Oslo with responsibility for nearly 60 employees. With Solveig on the team, the architectural profession in Gyaw Gyaw is strengthened. Solveig is knowledgeable and tidy and has a good overview of both projects and the surrounding society. She knows Gyaw Gyaw from previous collaborations with Line Ramstad and has shown a good understanding of the organization.

Christine Riiser Wist has been a board member in Gyaw Gyaw since 2017. Christine has a broad background with degree as a librarian and as a landscape architect. Christine has worked as a librarian in the National Library of Norway and as library manager in Nes Kommune. She also has more than 10 years of experience as a landscape architect conducting a variety in tasks for a selection of smaller and bigger consultant companies within the building industry in Norway and as a planner in a local municipality. Christine is now working as a consultant for Sweco.

Line Ramstad is keeping her duties with the team in Noh Bo as well as being the leader of the board from Norway. She has the overall responsibility for the organization, is supporting Paw Eh Wah in project, planning and organizational matters in Noh Bo and has the main responsibility for architecture and project management.



Line Ramstad at Gaw La Heh school that she has designed.

When my local colleagues and I started Gyaw Gyaw together, it was based on friendship and mutual respect. This is something we have deliberately valued, nurtured, developed and protected together.

Still, if someone ten years ago would have told me that we in 2019 could look back at more than 60 successful projects implemented and shown me the development we have gone through within each project and how equal and organized we are as an organization, I would never have believed them.

What really amazes me, looking back, is how personal challenges among the team members, myself included, have not negatively affected the team in the long run. Key persons like Koe Taw and Peter have also left, but even if it felt like losing a leg at the time, the team slowly and equally covered the loss; responsibilities were divided differently and the organization grew stronger. Of today's 10 members, 6 have been part of the team since the start.

As internally displaced people, refugees and illegal immigrants, survival has been the main concern and long-term planning has not been of high importance and thus has not been established as a key value among Karen people. Living in and oft the jungle is labour intensive and in an area where monetary economics is not solely implemented, to survive is more about using time to help each other, find the food and materials needed, than to earn money to buy goods and services.

For us, one of the main factors of success has been to develop the organization so that each team member can contribute to develop our organization through daily work with Gyaw Gyaw and still be part of the village and fulfil their requirements at home. First family, then Gyaw Gyaw, then your neighbour is an overall rule within the team.



Photo: See Da Pah

Gyaw Gyaw 2009. Travelling to our first project. Koe Taw, Line Ramstad, Saw Dee, Pah Me, Phillipa, Peter and Na Ri Sa Pah.

As former soldiers, the team members are used to taking orders and not questioning them. Within civilian jobs in our area, this hierarchy is continued. Unlike in the army, you can just leave if you do not agree. With this backdrop, it has been a long and winding road to create a foundation where it is expected, safe and valued for everyone to express their opinions.

With no egalitarian work experience, the language and understanding of what it meant to have equal rights and to be heard as part of a team, was also not present. Our first contracts were therefor to state that disagreeing was ok, that there was no need to leave because of different opinions, that it actually could lead to better solutions if more people were heard.

It has also been a challenge to find a way to divide between responsibilities and actual implementation. We tried for a while to give higher salaries to the ones with more responsibilities, only to realize it worked against its intentions. The people in charge made all the decisions alone, as expected by leaders here, and then gave orders to the persons implementing it. Decisions were based on one person's understanding alone and not questioned, the people implementing it had no ownership to the task and the quality of our work went down.

Since 2012 we have therefor had equal pay for everyone, me included, and it has been a major success. Maybe not for my personal pension opportunities in Norway, but for us as a team, I will assert that our equal pay has been the key factor for us developing from a clear hierarchical structure, as expected culturally in this area, to an egalitarian organization where everyone has different responsibilities, but still an equal role in the team.

It was not done in a day, and it has been two steps forward and one back, but it has progressed in the right direction. I will never forget the first time I got a phone call from the team where they called to have my opinion on something, only they were so into the discussion they forgot I was there and just hung up. To say I was proud does not halfway cover it!



Photo: Line Ramstad

Klay Poe Klo Primary school. Completed by Gyaw Gyaw 2019. Design Jae-Young Lee.

Both Jae and Daniel are highly valued and respected by the team and our collaborative partners, they have great understanding of life on the border and are humble and open for feedbacks. Still, based on a tradition of not raising ones opinions, especially not with foreigners, the team can be reluctant to give their actual opinions on their work. Just like with me in the beginning. The result has been a couple of restarts for the designers and a few unnecessary construction mistakes built, but all in all the collaboration has been most successful and lifted both our projects and our organization to a new level we are grateful for.

Thank you to our sponsors who has supported us, given us the opportunities to grow, develop, make mistakes and learn from them. Without you, we could never have made it this far! We are exited for the future and looking forward to the next 10 years to come.



Photo: Vincenzo Florano

Gyaw Gyaw 2019. From left: Pah Da, Pah Me, See Da Pah, Phillipa, Line Ramstad (Nee Ga Mwee), Ste Pah, Kee Kee Pah, Jae-Young Lee, Daniel Evensen, Paw Eh Wah. Saw Dee and Phaw Reh Mo was not in the picture.



Photo: Vincenzo Floramo

Paw Eh Wah in front of Gaw La Heh school where she was the project manager.

2019 was a wonderful and productive year for Gyaw Gyaw.

We have made five projects, including Gyaw Gyaw storage and repairs of an old project.

We have also divided the work more carefully and everyone is solving their tasks very well, both by them selves and as part of our team. **See Da Pah** is responsible for building site, **Pah Me** for details for building, **Phillipa** for social security and **Kee Kee Pah** for budget and economics for each project. **Pa Da** does not have any main responsibilities, but help to build the buildings. **Saw Dee** is responsible to drive the car, organize and do the shopping outside of the village when needed.

This year we also got a new team member. **Phaw Reh Moo** is a trained teacher and responsible for communication and reporting from building site. She also makes food for the team and teach the teachers while the rest of the team are building.

We also lost a member. With four small children, travel every week is not easy for **Ste Pah** and his family. He is now working in the church where his wife is also employed.

As before, **Line** is responsible to organize to the main sponsor and find the budget for Gyaw Gyaw to be able to run safely for every project. She also make sure we have a good design and drawings for each building. **Jae** and **Daniel** are make building design and I, **Paw Eh Wah** manage between the team members and designers for everyone to understand the building language and communicate with everyone around each project.

How we work:



Team meeting



Meeting with headmaster for new project



Meeting with village for new project



Measuring the land



Preparing for construction



Preparation of lunch

Photo: Line Barstad

We are small group of people that help to develop the lower part of our society that need help for students to stay and to study. We mainly build classrooms, dormitories, kitchens, and toilet buildings and are careful to develop the projects together by measuring, drawing, planning, discussion and suggestion back and forward together.

The team from Noh Bo village See Da Pah, Phillipa, Pa Meh are go to work and they have to away from family Monday to Friday, but Kee Kee Pa from camp, Pa Da and Phaw Reh Moo are from Myanmar they meet their family when we have holiday time and only when family get sick.

When the school leader or school teacher come to give information about what they need for their school, we use time to decide and plan. Do they want it or do they need it?

We also need to know if it is possible to do and find out all information as the transportation, a place to stay when go to work, the materials that we can get from there, how do we work with community and who we need to communicate with. After that we balance how much we have in account and how much we need to spent for each project.

When we know it is ok, we go to measure the land for the architects and make a plan for each project who will design the building.

When the drawing is ready, we show the idea to the school leader to decide and give idea what they want to change from the drawing. On this situation the team have to balance between village people and architecture design from west. The main is for students to have good place to learn and good climate in the classroom for wind, light and safe from rain and to build them in good understanding and and happiness for everyone.

The year of 2019:



Workshop



TTC Kitchen



Dormitory for Je Po Kee School



Jae, Paw Eh Wah and See Da Pah in Klay Poe Klo



Kle Mo Kee classroom I



Planning meeting

Photo: Line Ramstad

We started our year with a workshop with two board members, three drawing designers for buildings and the team members together. In the workshop we went to see all the main projects we have made for students to study and looked at future projects together. We also have meeting together with board member to make a better understanding how we work for others.

After workshop we continue to finish TTC kitchen. It is the first design by Daniel. From his design we learn a lot more about the detail and fashionable way to use bamboo together with timber. The team have learned from new ideas to improve their skills. We build with cement foundation, the wall with timber, bamboo and brick, and the roof with timber construction and iron roof.

In February we waited for the drawings for dormitory 1 for Je Poe Kee school to be finished and we used the time to repair Gyaw Gyaw's storage. The reason it was made by bamboo wall that was naturally weakened and broken and we replaced it with cement foundation and timber. At the same time we also build a stone wall for family to make the house safe from flood.

After repair the storage we started dormitory 1 for Je Poe Kee school. We have used five months, until July, to complete it. The reason we prepare the soil brick for next dormitory 2 at the same time. The building is design by Line, and it is the best solution to make the building for students so they can live like home when they live in dormitory to study in the school years. We build the wall with soil brick and timber window. The foundation with cement floor. The roof with timber construction and iron roof. Inside we have made bed to sleep. It is a room with natural light and air going through the building, but at the same time safe from rain. The students and teachers are happy with it and want to have the same for dormitory 2.

Every year we have holiday for some of the rainy season. The rain start in May and last for 4-5 months. We choose August for holiday because it is the most heavy rain and we can not cross the river with boat and all our work is now in Burma border.

There is also not a good road and with heavy rain it get slippery by mud and it get difficult to drive. We have to prepare before raining season to transfer equipment and materials that we are going to use to work on the building afterwards.

For the holiday we have our saving money to use. When we work, we save for 30 bath per a day. In the holiday we use this and spend our time with family and fix our homes when needed. In this year, I, Paw Eh Wah, got opportunity to go Norway and meet all special people and for the holiday in August I needed to go back Myanmar to get visa for travel for next month.

In September we wait for the rain to stop and to start next project, Kle Po Klo classroom 2. The drawing is design by Jae. It is a small classroom made by bamboo and timbers. The team are used to work with bamboo and timber because they have grown up in this area where most houses are made with bamboo and timber. We build the foundation with strong post, timber floor, bamboo wall and timber roof construction and iron roof. After we finish, we transport equipment and materials to Kle Moe Kee project.

In October we repair two places. In Je Poe Kee toilet the cover over the sewage hole was broken and had fallen into the hole. In Kler Deh, one adobe kitchen wall needed to be replaced because they had moved water there. Normally we agree that the village will fix if something break. This time we have extra time and choose to repair for them. The reason we are not ready to start the Kle Moe Kee classroom because of we miss between the time to have the drawing.

In November we start Kle Moe Kee classroom 1 and this classroom is designed by Daniel. We have a good time working with village people to build the classroom and the school leader, teachers and students are happy with the classroom that we make. We build with strong post foundation, timber wall and timber roof construction and iron roof. Timber and bamboo is bought from their environment because they produced timber from forest and get bamboo from nature. In this way we also help their economic to support their community.

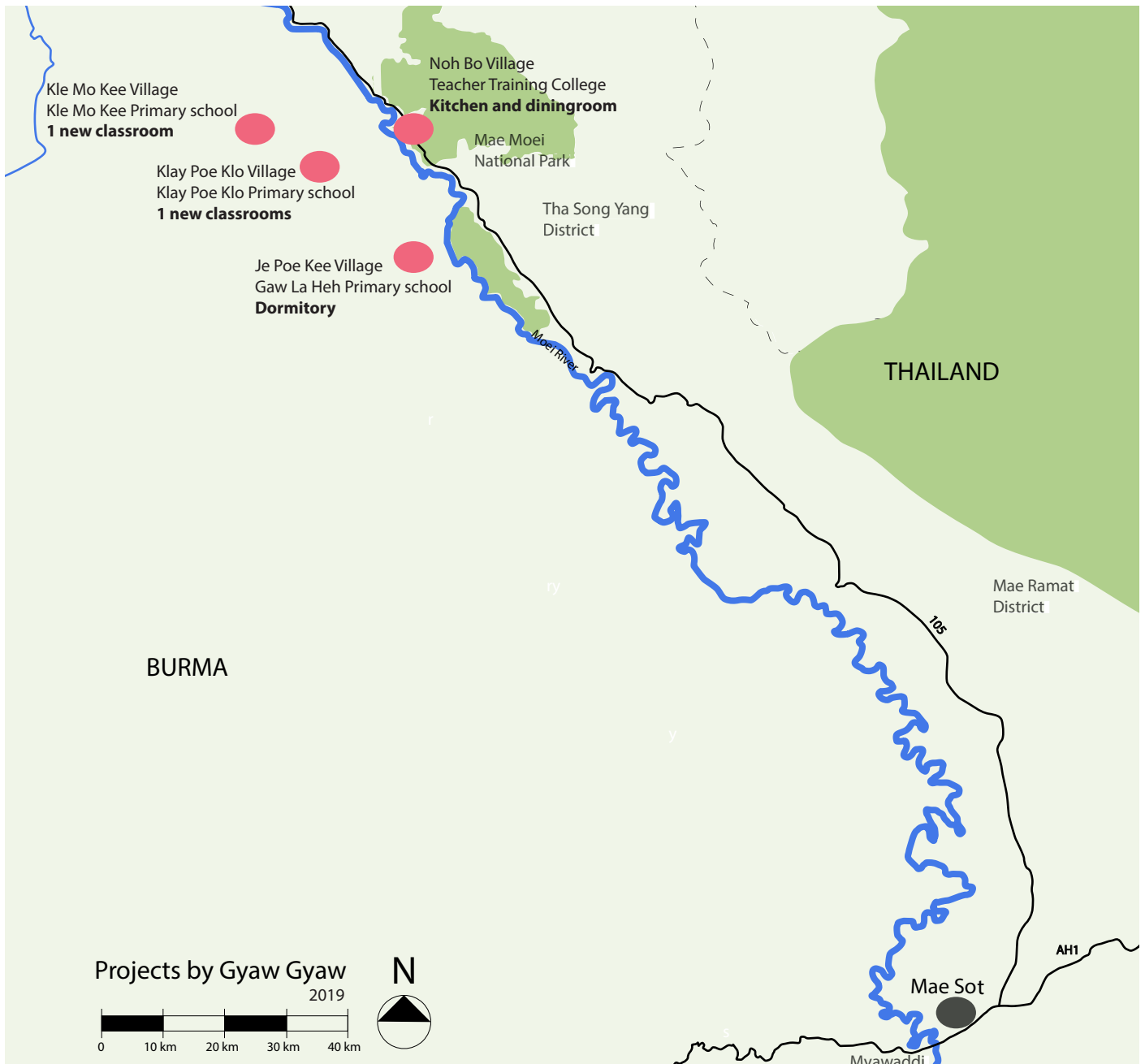
They also recognise the materials from their homes, but we are more fashionable because we have a good drawing design from Line, Jae and Daniel. The mixture of culture also make the team study and learn different ways to build to improve their knowledge for building. They learn how to make strong and better way for the building.

From this year we really learn how to better plan the time between drawing and team worker. The team workers also need to have better communications with designer and be more clear what they do not understand, what need to change and what is done different from the drawing. We have solve this problem by discussion and suggestion for better future planning together.

We would like to thank for the great period we have all had together this year and especially thank you to the sponsor who make it possible for us to complete one more year safely and finish each project we promise. We are also thankful for have a job from Gyaw Gyaw so we can keep our families safe with food and education.

Thanks to Line for support and standing up for us to be strong and understand our life. She gives us opportunity to improve our knowledge and to learn to make a better future. We thanks to Jae and Daniel for helping and sharing their time with us, even they have also other work to do. Thanks to team worker for giving their time to work away from family and build the buildings and improve life in the jungle area. Thanks to everyone who has given money and time to contributed to our small projects to make a better world for future generations.

PROJECTS AND NUMBERS



Projects 2019:

- Teacher Training College (TTC) in Noh Bo - Kitchen and dining room. Continuation from 2018.
- Ka ta Primary School - Roof
- Gaw La Heh Primary school - Dormitory I
- Klay Poe Klo Primary school - Classroom II
- Kle Mo Kee Primary school - Classroom I
- Improvements and repairs

All amounts are indicated in Norwegian Kroner. (NOK)

Average conversion rate for 2019 was 352 THB/ 100 NOK.

Actual project costs may vary due to currency exchange rate fluctuation.



Project budget:	104 916,- NOK
Project costs:	14 387,- NOK i 2019 + 75 563,- NOK i 2018 = 88 286,- NOK
Size:	72 square meters including kitchen + dining room
Project period:	4 weeks in January 2019 + 16 weeks in 2018 = 20 weeks
Architect:	Daniel Evensen
Project responsible:	Line Ramstad
Project management:	Paw Eh Wah
Head of construction site:	See Da Pah
Gyaw Gyaw team:	Phillipa, Pah Me, Kee Kee Pah, Pa Da, Ste Pha, Saw Dee
Project staff/feedbacks:	Jae-Young Lee

TTC kitchen and dining room is built for the students and teachers at Teacher Training College (TTC) in Noh Bo. It is also used by the church that owns the property for their weekend schools and for activities in connection to their services. With its newly gained popularity, the kitchen and dining room is also used as a community building when space for larger gatherings are needed.

All rooms are based in and around a central element built in bricks in the building's full length. On one side is a kitchen, food preparation and a washing area. On the other side is a dining room. The wall itself is angled and in each cubicle is a small room for storage. The brick wall is a freestanding element. It holds weight from the roof, but the main construction is secondhand timber posts on concrete shoes that is connected with timber beams in a traditional structure. It is also strengthened with diagonal support.

The outer walls are full height doors/windows and wall modules in a pattern of slanted timber slats and bamboo braided in beautiful patterns. The flexibility in the wall's openings can be used to adjust to the light and wind impact through days and seasons. Water storage system for the kitchen and benches and tables for the dining room are also designed and built by Gyaw Gyaw.

ROOF FOR KA TA PRIMARY SCHOOL



Photo: Line Ramstad

Project budget: 0,- NOK
Project costs: 10 229,- NOK
Size: unknown
Project period: 2 weeks in April 2019

Design/implementation: Bo Han Son (portrait ►)
Project responsible: Bo Han Son
Project management: Paw Eh Wah
Gyaw Gyaw team: See Da Pah, Saw Dee



Bo Han Son is the regional leader for the area where most of our projects the last years have been implemented. He is a popular leader that manage to combine having a respected position among the different leaderships on both sides of the border and also work hands-on among the people living within his area. He goes under the nickname “the funny storyteller” but is at the same time quiet and serious, and is not a man who asks for much, or talks with huge words.

Ka Ta is a small village a bit further south than we have worked so far. The village already had a school, but the building was in bad shape and needed to be replaced. It is an area with good access to timber, so together with the villagers, Bo Han Son built a new school building himself. This is quite normal. The special part of it was that he had taken Jae`s design from Klay Poe Klo Primary School, simplified somethings, extended the length, but used the main design as we built it under his leadership in 2018.

What a compliment! Now they needed a roof. Normally we are not supporting other projects, but with a backdrop like this, we were more than happy to contribute. We know for sure they like our designs and our relationship to this part of the borderarea is also further strenghtened.

DORMITORY FOR GAW LA HEH PRIMARY SCHOOL



Project budget:	127 755,- NOK
Project costs:	106 595,- NOK
Size:	96 square meters
Project period:	18 weeks: Feb to July, including adobe production for dormitory I+II
Architect:	Line Ramstad
Project responsible:	Line Ramstad
Project management:	Paw Eh Wah
Head of construction site:	See Da Pah
Gyaw Gyaw team:	Phillipa, Pah Me, Kee Kee Pah, Pa Da, Ste Pha, Saw Dee
Project staff/feedbacks:	Jae-Young Lee, Daniel Evensen

The dormitory is one open room, divided into six smaller cubicles that are all twisted 20 degrees on the rectangular slab/roof structure. The twist leaves each cubicle with a semi sheltered area with a bed that is 2 x 2 meter and adjusted the to the one size fits all mats that are available along the border. Each bed is adapted to two older or three younger students. To sleep alone is not normal in this area, so this reflects a culturally common way of living. It is also space to hang mosquito nets and clothes on each bed and the whole building is planned to be easy to clean.

The overall design is climate and landscape adjusted and the symmetrical twisted walls create a design where direct sunlight dos not reach the inside. The windows are open towards one direction only, and the corner of each cubicle protects them for direct sunlight. Natural airflow is present and contributes to increased comfort for the students. The dormitory is built around a traditional timber construction, adjusted to the twisted walls. The middle post is moved from the center for the aisle to be more functional and better adjusted its use. Freestanding adobe walls are placed on a concrete foundation under the roof. The walls could just as well have been loadbearing, but due to our schedule and the season when the dormitory was built, a roof to work under eases the process and strengthen the building in the long run.



Je Po Kee Village

Placed on a picturesque hilltop on the Burmese side of the Moei River Valley, Je Poe Kee village was on several occasions attacked by the Burmese Army and finally abandoned. For years the remnants of the village were hidden in the dense jungle, but in 2008, a few people moved back. Among them the headmaster, who started Gaw La Heh Primary school, and placed it at the center of the communities reconstruction.

Since then the school has grown and established itself as a popular school among children from the surrounding area, now hosting approximately 200 children divided into 7 classes from kindergarten to level 6. Of these, approximately 100 students reside in the dormitories. With all classes sharing one larger classroom, the need for better adjusted learning facilities was imperative. The school was also open about their additional need for dormitories.

Back in 2015, we agreed to start with classrooms and have completed two every year since 2016. They are freestanding pavilions under a common roof that collectively creates a semi closed school compound, well-adjusted to both landscape, climate and use.

With a great collaboration behind us and an obvious need for two new dormitories, we agreed to also provide the school with these facilities. The last one is to be built in 2020.

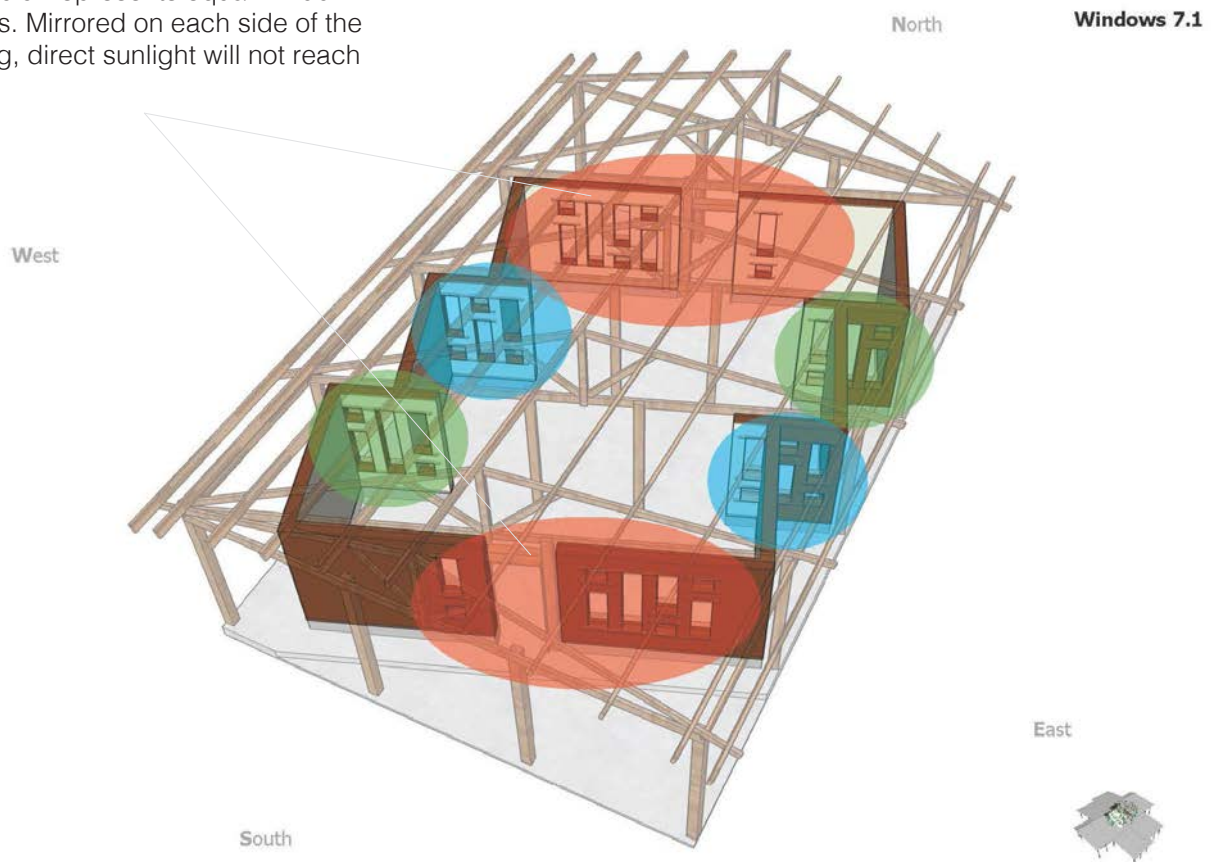


Gaw La Heh school compound. Built by Gyaw Gyaw 2016, 2017 and 2018. Design by Line Ramstad



Dormitory placed in the landscape

Each color represents equal window-
designs. Mirrored on each side of the
building, direct sunlight will not reach
inside



The design is adjusted to avoid direct sun, but the windows are finetuned to get daylight and airflow through the building.



Dormitory seen from the school compound.



Twisted walls are creating sun protected outdoor spaces to hang clothes to dry. The windows are protected from sunlight.



Photo: Line Ramstad

The pit from adobe production becomes the sewage reservoir for the toilet. Also made by Gyaw Gyaw.



Photo: Line Ramstad

Dormitory interior with beds for two older, or three younger students in each cubicle. Thin bamboo sticks for attaching mosquito nets are placed at the bed corners

CLASSROOM II FOR KLAY POE KLO PRIMARY SCHOOL



Project budget:	53 622,- NOK
Project costs:	15 256,- NOK*
Size:	34 square meters
Project period:	4 weeks + preparations from the village
Architect:	Jae-Young Lee
Project responsible:	Line Ramstad
Project management:	Paw Eh Wah
Head of construction site:	See Da Pah
Gyaw Gyaw team:	Phillipa, Pah Me, Kee Kee Pah, Pa Da, Phaw Reh Mo, Saw Dee
Project staff/feedbacks:	Daniel Evensen

Klay Poe Klo Phase II is a detached extension of the first school building we designed and built for the school in 2017/2018.

The new classroom is a freestanding building, but closely connected to the main building with overlapping roof and connecting stairs and entrance area.

The construction is based on traditional construction principles in the area and is placed on timber posts. To prolong the buildings life in relation to decomposition and attack from termites, these are reinforced with low concrete shoes. The roof is reinforced with diagonals and the walls are given a design which both protects against sun and rain and releases air and light through the room in a beautiful and functional way.

* The actual costs for this project are approximately 1/3 of expected budget. This is a huge difference and is due to the villagers being extremely happy with our collaboration and both arranging for most timber themselves and also preparing all materials needed in advance, so the construction period was shortened as well.



Photo: Line Ramstad

Klay Poe Klo Primary school consisted of one classroom that was shared by four classes and three teachers.

Klay Poe Klo is the first project completed with Jae-Young Lee as architect and the first school we have built in wood and bamboo. Adobe has so far been our preferred material for schools, but there is a lot of rock in the ground here and the village has little access to the sand needed for both concrete foundations and finishing layers for adobe walls. They do however have plenty of timber and bamboo, so these were natural materials to choose.

The old school in Klay Poe Klo consisted of one elongated room that all 6 classes shared. Even though it was old and worn down, it had a rainproof roof and stood steady on thick timber posts. The plan was for the old school building to be used in addition to the school building we completed in 2018. This would give the school acceptable facilities where two and two classes would have their own rooms. If the school continued to develop in a positive direction, and the need for an additional classroom would be present, we would consider to build phase II in a few years.

The school was ok with this, but when we came back for inspection only months after the first building was completed, the old school was gone. Someone mumbled that it had fallen down, but with the thickest posts in the whole area, that could not have been the case. The village had simply joined forces to tear it down, and now they were ready with both timber and effort for us to start the next step immediately. No doubt that our efforts were appreciated and that they really liked the new school building!

Klay Poe Klo is a poor village. The school only has a few teachers and they have little additional education besides primary school. Under these circumstances, an appropriate question is how much the children actually learn at school? With the parents being dependent on growing rice and vegetables and harvesting food from the jungle to support their families, it is better for the children to be at school and learn something, than being home alone. The school also has a respected position in the village and in the long run, hopefully raising the quality of the school can lead to further improved livelihoods for the village itself.



Photo: Vincenzo Floramo

Klay Poe Klo first phase containing of two classrooms and a library was completed in 2018

In collaboration with KED (Karen Education Department) that runs the school, we therefore agreed to adjust our schedule and start the second phase already in 2019. While working on designing the main building in 2017 and 2018, Jae had luckily also made frames for the addition and we therefor agreed to start the second phase after the rainy season.

The budget was based on experiences from the first phase and adjusted to actual amount of materials and time needed to complete it. But, when we arrived the village in September the villagers had not only gathered timber themselves and made really good deals for the timber that was additionally needed, they had also prepared it all, dug holes for the concrete shoes and collected bamboo that was also prepared.

With money and time saved on materials and preparations, a lot of villagers helping out, and a similar design recently completed, the building was done in 1/3 of expected time resulting in a cost also 1/3 of expected budget. On top of that we had timber leftover that we could move to Kle Mo Kee for our school project there.



Klay Poe Klo, additional classroom. design by Jae-Young Lee.



Klay Poe Klo inside the classroom.

Photo: Line Ramstad



Klay Poe Klo exterior.

Photo: L

Photo: Line Ramstad

CLASSROOM FOR KLE MO KEE PRIMARY SCHOOL



Project budget:	56 137,- NOK
Project costs:	36 616,- NOK
Size:	42 square meters
Project period:	7 weeks

Architect:	Daniel Evensen
Project responsible:	Line Ramstad
Project management:	Paw Eh Wah
Head of construction site:	See Da Pah
Gyaw Gyaw team:	Phillipa, Pah Me, Kee Kee Pah, Pa Da, Phaw Reh Mo, Saw Dee
Project staff/feedbacks:	Jae-Young Lee

Kle Mo Kee Classroom I is the first out of three classrooms to be built for Kle Mo Kee Primary school in the coming years.

The base for the design is a framework developed in close cooperation between Daniel, Jae and Line and then used as a common base for each one to design a classroom for the school.

The design is adjusted to the pavilions already there. It is a timber construction on posts, with timber walls. The construction is also quite traditional, but with a larger focus on strength, longevity, functional use and better light and airflow conditions in each room. To extend the lifespan of the building, each timber post is placed on a concrete foot. Good and long-lasting roofs are also hard to find in the area, so it is bought in the area's biggest town, Mae Sot, and transported here.

The actual costs got lower than expected due to timber sold to us in the neighbor town of Klay Poe Klo for a lot cheaper price than normal and moved to Kle Mo Kee.



Photo: Line Ramstad

Kle Mo Kee is situated in a valley next to the village and contains of small pavilions, each with one classroom.

We have followed Kle Mo Kee school for many years. It started with TTC school moving their teacher training education from the largest refugee camp in the area, Mae La Camp, to our village, Noh Bo, in 2013.

Kle Mo Kee is one of three schools in the area run by TTC. They are following Karen Education Departments curriculum, but in addition, they focus on learning conditions, understanding and development of students, also as individuals. Unfortunately rote memorization; where the students bluntly repeat after the teacher, is the norm along the border and the result seems to be a few good students, and a larger amount of students passing through without that much actually learned. TTC schools are therefore unique schools in our area, and thanks to a smart and open-minded village leader, Kle Mo Kee was the first to completely shift to their standards.

With educated teachers and a school philosophy based on actual learning, the atmosphere at Kle Mo Kee Primary school is very different than in neighboring KED run schools. This seems to affect the village too and compared to other villages in the area, the village has gone through a more sustainable development and seems more healthy and well run. The school's good reputation has naturally also led to more students from a larger area attending school here, and their need for more classrooms was clear, so we were happy to start a collaboration with them.



Photo: Line Ramstad

Kle Mo Kee village life. The river is the nerve of the village.

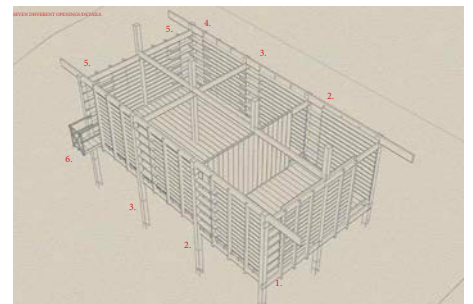
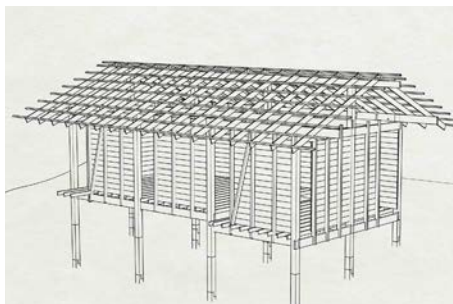
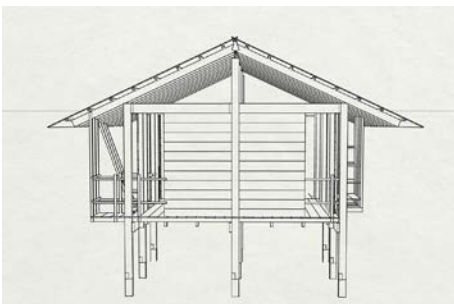


Meeting with village leader during our workshop in February 2018.

After the initial research period, we had the first official meeting on site during our workshop in February 2018. In addition to the team and architects, our board was also present. Together with the team and villagers, agreements were clarified and the needs explained for Jae, Daniel and Line to further develop into design.

The three architects met again in Sjusjøen, Norway in March, and Daniel came up with an idea of turning the construction inside out. To be honest about how the building is actually made was an appealing thought. It also left the interior with more useful wall surfaces. To be aware of how the roof construction is actually made, decrease the amount of timber needed, but at the same time further strengthen the construction with diagonals, was also an intended result. The roof angle, main structure, materials used and overall shape and scale, would still be similar to the pavilions already on site.

With this in mind, Daniel made sketches for the first building that Jae, Line and Paw Eh Wah gave feedbacks on, that Paw Eh Wah took further to the team and that they, in time, also brought to the school for teachers and village leader to comment on.



Design process by Daniel Evensen



Photo: Phaw Reh Mo

Process: Villagers helping out placing posts. Pah Me reading the drawing. See Da Pah and Phillipa making inner walls.

Where honest feedbacks are seen as more of a compliment in the west, the whole aspect of not losing face in the East, makes this process a lot more complicated on the border.

This is where Paw Eh Wah plays an important role as translator. Not only between languages, but also between cultures. Still, somethings get lost in translation, but this is something we are always aware of and that we are continuously working to improve. A big step has been to get Phaw Reh Mo in our team. She is a trained teacher and is helping out with communication on site, internally and between Gyaw Gyaw and the villagers. She reports back to Paw Eh Wah who again contacts Line and the architects when needed, and she is also training the teachers while the rest is building. She also buy food and cook, and her delicious meals, made out of what she can get on site, are famous far outside of our team.

All in all, Kle Mo Kee Classroom I is a great success. Good proof of that is See Da Pah`s added artistic element to the building/structure. Daniel designed a small veranda for better airflow and asked the team for ideas for the railing. See Da Pah used a week, only left over materials and made it into a small artistic element.



Photo: Line Ramstad

See Da Pah and his veranda. The headmistress and main teacher are happy with the result, and so is Phaw Reh Mo.



Photo: Line Ramstad

Kle Mo Kee Classroom I



Photo: Line Ramstad

7th grade using their classroom.



Photo: Phaw Reh Mo

The classrooms are simple and open, but also provide places for more privatized learning spaces.

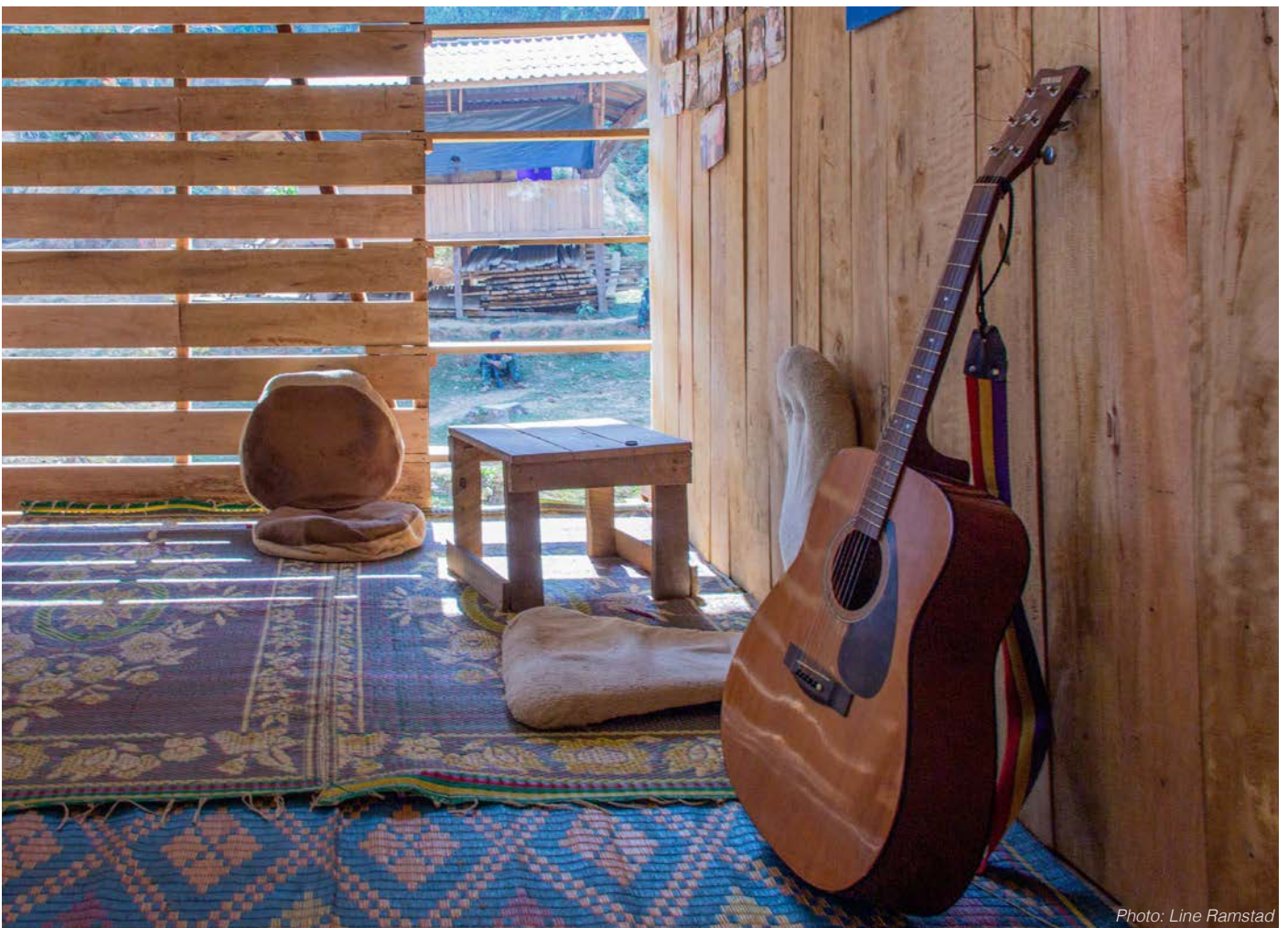


Photo: Line Ramstad

Additional room for smaller groups.

IMPROVEMENTS AND REPAIRS



Project budget: 0,- NOK
Project costs: 22 076,- NOK
Size:
Project period: 6 weeks

Project management: Paw Eh Wah
Head of construction site: See Da Pah
Gyaw Gyaw team: Phillipa, Pah Me, Kee Kee Pah, Pa Da, Phaw Reh Mo, Saw Dee

We follow up on all of our projects long after they are completed. This ensures both safety for the users and is a good source for learning for us. Our contractual responsibilities end after two or three years, depending on the project, but sometimes we also improve upon previous projects after this period as well.

When we make adobe, we use the pit left from production for sewage for toilets. It is afterwards covered with pipes for venting gasses. This time the pit behind the toilet in Gaw La Heh school was larger than normal. It was also made on a slope and after the first rainy season, the soil holding the cover washed away enough soil for the cover to fall into the pit. It is of course our responsibility to fix this. The pit has now a well reinforced concrete slab that covers not only the hole itself, but also a larger area. It is also decently vented.

Other times damages to buildings are due to lack of maintenance from the users' side. In Kler Deh High school this has been an ongoing issue. We have had multiple meetings with the school about these issues, but unfortunately, they have had an uninterested headmaster and information was neither acknowledged, nor passed on. He has now been replaced with a headmaster with interest for students, fellow teachers and the buildings at site.



Adobe wall is demolished after having a water pipe pouring water towards it for an extended period of time

With a new headmaster in place, we decided to improve the kitchen that the former headmaster had damaged by moving a water pipe into an adobe wall. Termites had also been allowed to make a nest in one of the dormitories, and while we made an attempt to improve the situation, it might be too late to save the dormitory in the long run.

Sometimes we also need to use a little time and money to make sure our work can move on in a safe direction. Many years ago, we made a temporary storage for equipment and surplus materials behind the toilet building on Paw Eh Wah, Saw Dee and Line's property. Made with a light bamboo construction, the storage was not made to last and it was no longer safe. It is now replaced with timber slats on a concrete foundation with a door that can be closed and our equipment can safely be stored when it is not used on building site.



Most of our work is done manually, and to maintenance equipment is something we use quite a lot of time to do. We also have a generator and electrical tools, and these need to be stored in a safe place when not in use.

RESULTS AND BUDGETS

* All numbers in NOK

INCOME

	Operating revenue			Budget		
	2019	2018	2017	2020	2019	2018
Corporate Sponsorship	508 000	543 864	556 045	438 000	352 000	497 000
Regular Monthly Private Donations	20 350	21 400	20 200	20 000	21 400	21 600
Lump Sum Private Donations	5 750	6 000	19 352			
Interest	2 095	1 207	1 624			
Sum operating revenue	534 259	572 471	597 221	458 000	373 400	518 600

EXPENSES

	2019	2018	2017
Projects (see project costs for details)	221 596	203 516	299 325
Running costs Noh Bo	86 922	59 217	93 416
Equipment/car/bike	32 618	21 411	20 923
Workshop	12 771	11 420	0
Support	5 905	6 817	6 869
Operating expenses Noh Bo	359 812	302 381	420 533
Running costs	12 200	12 818	41 267
Equipment	37 947	9 231	0
Travel Workshop + Architects*	46 614	62 323	17 796
Operating expenses Norway	96 761	84 371	59 063
Sum operating expenses	456 573	386 752	479 596
Net result	77 686	185 719	117 625

* Tickets to workshop in January 2019 were partly paid in 2018.

ASSETS

	2019	2018	2017
Estimated: Vehicles, computer, camera, tools, machinery, materials.			
Fixed assets	150 000	100 000	151 000
Bank Deposit Norway	902 685	763 925	515 306
Bank deposit Thailand	30 796	21 694	53 959
Cash	7 058	37 134	10 280
Current assets	940 539	822 753	579 545

PROJECT COSTS

Projects	Cost	Budget
Kitchen TTC *	14 387	104 891
Storage Gyaw Gyaw tools and materials	16 876	17 034
Gaw La Heh Dormitory I	106 959	127 755
Ka Ta School**	10 229	
Klay Poe Klo Classroom II	31 329	113 560
Kle Mo Kee Classroom I	36 616	56 780
Kler Deh Improvements	5 200	
Sum project costs	221 596	420 020

* Continued from 2018. Total costs 351 162 THB/88 286 NOK. Budget for total project cost. ** Support for roof.

Actions	2019	2018	2017
Salary	104 129	94 092	109 922
Materials	83 382	79 698	156 623
Food	18 107	18 503	20 840
Transportation	15 978	11 223	11 940
Sum actions	221 596	203 516	299 325

Comments to the result

2019 was the first year where we budgeted with a deficit.

HENT has supported us since the start in 2009 and they are still onboard. Our contract with HENT for 2019 – 2021 is NOK 200 000,- per year. In addition, they are also supporting Line directly through her sole proprietorship for her to fulfil the income requirements to live in Norway with her husband Nick (USA) and still be able to run the organization.

Asplan Viak has also been supporting us since the first years but have now signaled a change in priorities and have made a final contract where their annual support of NOK 200 000 per year is spread over a two-year period as a closure. For 2019 and 2020, our contract with Asplan Viak is NOK 100 000 per year.

Since 2009, we have also received support from BAIAS, Rotary in Ullensaker and Kløfta, and there has been lump sum and monthly donations from friends. We have been working towards getting one or two more additional long-term sponsors onboard as well. Vestre has been our first choice, and after a longer process, they signed a contract of NOK 100 000 with us in the second half of 2019. This was not budgeted.

The last years, we have also received support from Agraff AS. The support from them is based on their surplus and is done by yearly contracts and was this year generously NOK 20 000 + NOK 70 000. This was also not budgeted.

With the additional support from Vestre and Agraff AS our expected deficit was by the end of the year turned into a surplus of NOK 77 686.

This in spite of a still declining value of NOK towards THB, a long planned extra cost for a new computer and an additional cost for Paw Eh Wahs trip to Norway.

One of the main reasons for this was again based on good planning. For our project in Klay Poe Klo, Paw Eh Wah and the team were able to get timber for a very good price. With design already ready for a coming project in the neighbor village of Kle Mo Kee, they adjusted our schedule, bought more timber for a good price and moved it to the next village while the road was open.

SUPPORT

We are, for good and bad, living in a small village where everyone to a big extent is part of the same society and dependent on each other. This goes even further in the remote jungle villages in the mountain range where we are working. To support different initiatives in the villages is therefore part of our duty as an included member of the society. Most often, we solve this commitment by repairing local buildings as needed, but we also build things, like toilets for the community. If someone gets sick or someone loses a family member, to support the one left behind is also something that is expected. The amount used for this is not high at all, but they are incredibly important for our safety and existence as a respected member of the local community.

Total amount spent on support in 2019 is 5 905,- NOK

As the years have gone by, the need for support to higher education has also grown. We are now in a phase where we are putting this into a better system where the students that actually pass primary school and manage to make it to public high schools and universities or alike, can receive some support from Gyaw Gyaw. We are also working on creating a pension system for the team members that reach retirement age and have been working with us for a long time.

Total amount spent on the education fund in 2019 is 0,- NOK

Since 2009, we have also supported our good friend Tasanee and her Safe Haven Orphanage. This is a support system by itself, where the money is paid to a separate account from private sponsors and transferred every month to Tasanee for her to use for the best for the orphanage. The responsibility for this will from 2020 be transferred to Ole Michelsen and his PlayOnside organization that works with children and youth along the border.

Total amount transferred to Safe Haven Orphanage in 2019 is 128 377,- NOK



Gyaw Gyaw architect meeting with Paw Eh Wah in Noh Bo, Line in Årnes, Norway, Daniel in Oslo Norway and Jae in Berlin, Germany.

With Paw Eh Wah as a strong and respected leader in Noh Bo, me, Line supporting and having the overall responsibility from Norway, Jae and Daniel filling their role as architects in a superb manner, responsibilities even better divided among the team members and our group additionally strengthened with Phaw Reh Mo in a new position, 2019 really showed us that the changes and adjustments we have made the last years, have absolutely been worth it. We are today stronger than before, we are better organized, communicate better internally as well as externally and our projects are reaching new levels in design and implementation.

We ended 2019 and started 2020 with focus on strategy. For a whole week we evaluated the past years and made plans for our common future. We also improved our contracts revised our statutes and made informative contracts for collaborative partners to better describe who we are and how we work.

We also arranged a workshop with the architects' present + a representative from HENT, and further improved our internal communication with improved tools and open discussions about how to give feedbacks across borders.

It will always be a work in progress, but so far it seems to have further improved our teamwork and made a positive impact on the result.

The first project to be implemented in 2020 was the second dormitory for Gaw La Heh school. This was designed by Line and was an adjusted version of the one presented in this report. The second and third classroom for Kle Mo Kee, designed by Jae and by Line, has also been on the agenda. With experiences from the first classroom in mind, and close collaboration with the village, these classrooms were completed in shorter time than expected. Still they were built with a higher level of detailing then ever before.

It is now rainy season and holidays, but the next project out is already designed. It is a teacher house, also for Kle Mo Kee, designed by Jae. The last projects planned for 2020 is for a village we have not yet worked. It is called Tea Du Koh and is placed even further up in the mountains. The road here is more of a path and the village is only reachable with cars some few months of the year. Life here is even more traditional than in other places we have worked, and with no electricity and water only from a well, the design needs to be simple, adjusted to traditions and have local maintenance strongly in mind. Daniel has gotten the task to design two classrooms and a teacher house for this village.

For 2020, I, Line hope to improve communication also internationally. It is time to get our story out there. The web page is currently under reconstruction and to simplify and visualize both descriptions of our work and the projects we have completed, is a rewarding, and ongoing task.

To look back at all we have done, see how much we have developed as individuals and as a team, to see how far we have reached with great friendship, good collaborations and few recourses, is something that makes me incredibly proud. I think I have the best colleagues in the whole wide world and the best sponsors too! Thank you HENT, Vestre, Asplan Viak, Baias, Rotary and Agraff. And thank you to friends and family that also support us. Without you, none of this would have been possible. THANK YOU for believing in us, for trusting us, for giving us the opportunity to learn, to develop and to continue to work for the schools in our area where we, with your help, can make a difference.

We see that what we do matters! We enjoy it and we do no harm! We are ready and eager to continue our work for many more years to come. Thank you for supporting us and reading our 2019 Annual Report.

On behalf of Gyaw Gyaw,
Line Ramstad



Photo: Line Ramstad