



ကယီကယီ | Gyaw Gyaw

ANNUAL REPORT 2020



Photo: Line Ramstad

TABLE OF CONTENTS



Gyaw Gyaw 2020	page 3
Reports Line Ramstad, director Paw Eh Wah, program manager Jae-Young Lee, responsible architect	page 5
Projects 2020 Gaw La Heh Primaryschool, Dormitory II Kle Mo Kee Primaryschool, Classroom II+III + Teacherhouse Noh Bo Primaryschool, Toilets Noh Bo village, Team house Workshop	page 18
Results and budgets	page 39
Prospects 2021	page 43

GyawGyaw 2020



Gyaw Gyaw extended team 2020: From left: Pah Da, Pah Me, See Da Pah, Phillipa, Line Ramstad/Nee Ga Mwee, Ste Pha, Kee Pah, Jae-Young Lee, Daniel Evensen, Paw Eh Wah.

2020 – what a year. A year where the Covid 19 pandemic held a tight and threatening grip around the world and led to thousands of migrants- and unregistered workers losing their income in the many factories, building sites and tourist industry in Thailand and Burma.

Coming from packed living conditions, via transportation in overloaded cars and busses, the returning workers were placed in temporary quarantine camps outside each village. That the border did not get heavier affected in the first round, is pure luck. Then again, there are hardly any numbers available and the deaths that could have been from Covid 19, was never investigated or labeled.

2020 was also a year of increasing political instability in Burma and rising military activity along the border. The elections held during fall 2020 was once again giving NLD a landslide, but even with actual control, the military did not take any risks and executed a military coup on February 1st 2021.

And in the middle of this, we have kept our work going. That is something we are proud of and that we also are getting compliments for locally. We are well organized with a steady leadership and a closely connected team. Years of conscious work in line with local conditions and in respectful collaboration with all local stakeholders, have once again also paid off. It would however not have been possible without a clear vision and manageable funds that allows us to adjust our work in line with the changing situation without changing course or break any promises.

Thank you to our fantastic sponsors that supports us with long term and manageable funds that we can utilize to the best for the people we work for and with, using sustainable architecture to increase education and democratic development along the border.



See Da Pah, leader of buildingsite.



Pah Me, detail carpenter.



Saw Dee, driver/organizer.



Paw Eh Wah, manager.



Phillipa, social responsibilities.



Phaw Reh Mo, assistant, reporting, teacher trainer.



Ste Pha, carpenter.



Kee Kee Pah, economic responsibilities.



Pah Da, trainee.



Line Ramstad, director/architect.



Jae-Young Lee, architect, in charge of architectural design for Gyaw Gyaw



Daniel Evensen, architect

BOARD OF DIRECTORS

Line Ramstad, director, Christine Riiser Wist and Solveig Dahl Grue

MAIN SPONSORS



asplan viak



BAIAS

REPORTS

LINE RAMSTAD

founder, director





Gyaw Gyaw has a fairly flat structure, but the leadership is female dominated. From left, Phaw Reh Mo (economics on building site), Paw Eh Wah (program manager), Line Ramstad (leader), Jae-Young Lee (responsible architect).

2020 – what a year. A year going into history with a global pandemic as its main attraction. A year where the society around us closed down, where the tourist industry, and numerous factories and working sites around in Thailand closed in a day, and the thousands of migrant workers that feeds their families through these jobs, were forced back to the border in overloaded cars and busses. That the pandemic did not spread more rapidly under these conditions were pure luck. Then again, there was no recordkeeping and cases of deaths that could be from Covid, was never registered.

For a large number of families that are reliant on income from a family member working “in Bangkok”, the lack of income for an extended family group, has been a bigger threat than the virus. With more people in each village and lack of goods normally being transported there, the pandemic has also affected the priced and basics are now pricier than ever.

The rainy season also came late this year, resulting in delayed rice planting. With a drier season than normal, the amount of the vital crop was also reduced, further increasing the costs for an already challenged population.

In Burma the political situation building up towards the November election got attention globally and observers reported of a fair and fairly democratic election that Aung San Suu Gyi and her NLD won with a landslide. Against the military leaderships desire for larger control. In the border areas, military activity from the Tatmadaw (Burmese juntas military), escalated towards the end of the year, in retrospect leading up towards the February 1.st military coup, 2021.

For Gyaw Gyaw, 2020 has, despite all the challenges, been a productive year. We are to a great extent used to challenging and changing situations. A global pandemic and a military coup have however been one challenge too much, also for us, but we have managed to get through and kept our work going, bringing hope and optimism to a hard-pressed society.

Once again, our teamwork and teamspirits stands out as the winning concept. All under great leadership in Noh Bo by our program manager Paw Eh Wah. It would not been possible without her and her firm, steady and caring leadership that creates the frame for our work. She has also become a highly valued leader for the local communities where we have worked through the years and we are incredibly proud of her.

After 11 years, I have also passed on the responsibilities for architecture in Gyaw Gyaw. German/ South Korean architect Jae-Young Lee is a valued member of our team that through close collaboration has used the last years to really understand our work and work philosophy and added on qualities within our frames, in both architecture and organizational matters, that we are extremely grateful for. It `s a great honor, to move the responsibilities for architecture onward to her.

It does not mean I am stepping down my responsibilities in this wonderful team, rather the opposite. Even being based in Norway, my job will always be to make sure we develop in a sustainable and wise direction. To divide responsibilities, see people grow in their positions, observe how it brings new energy and further development to our team, is a key for that to happen.

So, even in these crazy times, I am excited for the years to come. I am grateful to spend them with my wonderful husband Nick in Norway, with my colleagues and our trusted collaborators on the border and with peers around the world.

Without our long-term and trusted sponsors, it would however not been possible, and we are incredibly grateful for the support and safety you provide for us.

Do no harm is more important than ever in a time like this, but even with a military coup putting the society back to 2010, we do not give up and with a great team, close local partners, and wonderful sponsors, we will keep our mantra and create sustainable projects with the future users and keep our strong belief in a democratic development alive for years to come.



Gyaw Gyaw on tour, happy times during our workshop in february 2020, before the pandemic fastened the grip.

PAW EH WAH

manager



Photo: V...



Paw Eh Wah is the manager of Gyaw Gyaw, and have also grown to be a well respected leader in our area.

In 2020 was the year with pandemic of Covid 19 all over the world. It was a difficult situation for many people in our area as they struggle with work to serve their family. Gyaw Gyaw is safe because we have good management of budget, stronger main sponsor keeping their support and Line who stand in front of us. Line suggest before when we are beginning in years of Gyaw Gyaw to make a save account for future years it mean when something happen out of our controle we can finish our project as promise. We are the most fortunate group in a difficult time because we have special people, sponsor, architecture and team member who keep strength to go forward. We all are safe and healthy and are building the project at Gaw La Hel girls dormitory, two classrooms for Kle Moe Kee, toilet for Thai school and team house in this year.

We build for the girls dormitory in Gaw La Heh school is the same design like Boys dormitory in 2019, because they love the design with Ardobe building by Line. The building had the light and cool inside so we use the same tool, but different design. The team member have experience on making Adobe building in Noh Bo, Kle Dah and Gaw La Heh the more we build we understanding how to improve our knowledge to combine with the clay for stronger and safe longer. The teacher and students are joyful like home place to live in comfortable room. They thanks to sponsor, designer and team member who make their life safer in a better place.



Gaw La Heh Dormitory, process



Photo: Phaw Reh Mo



Gaw La Heh Dormitory, process



When we finish for Gaw la Heh girls dormitory we have to wait a time for a month because of Covid restrictions to start Kle Moe Kee classroom 2 and 3. The time when we wait we get paid half wage for each team member because we only have one income to serve our family.

After one month they open the gate to cross the river then we continue two classroom for Kle Moe Kee school. The first classroom is designed by Daniel at the end of 2019. We used the same materials as other classrooms but had a different idea of design and used timber in a pattern wall. The second classroom is design by Jae and it follow the same idea but different wall that students will have more place to hang resources on the the classroom walls. The third classroom is design by Line combine the idea together with beautiful classroom. When we finished two classrooms we prepared to flatten the ground for the teacher house for next building and asked helped from villager. The reason we need strong foundation of the soil get ready to use after holiday.

The teacher and students are happy to have their new classrooms because they have to combine two grade in one classroom to study. The students learn the best education in their area because the teaches are training by teacher from New Zealand curriculum. Most of the neighbor villager send their children to educate in Kle Moe Kee school. They thanks to Gyaw Gyaw team and the sponsor who gave money for students to have new classrooms building for their school.

We have holiday in August every years as it is the most raining time. The team have a problem to travel in the rain because we have to walk to carry food and material we need for building and have the problem to transport materials to the project because the road is only the ground of soil when rain come it destroy the soil get mud and slip the car. On holiday we have saved money for every team member depending on days they worked and give each of their own money we have saved for them. For holiday the team member will have time with family, some will repair their home and prepare what they need for family, but those who live in refugee camp and Myanmar can not go back because every place get lock down in holiday time.



Photo: Saw Dee

Villagers helped to carry sand for the toilet slab. We expected 20 people, but closer to 200 villagers showed up.

After holiday on September we not allow to cross the boundary we have to wait until lock down time is over. At that time Thai school need toilet, they have more than thousand students but they have only some of toilet for students. We did not have in our project plan, but we choose to do for them because we cannot go to work and wait without work to serve for family. We meet with the leader of village and school, communicate with them about what they need and how we can contribute with them. The villager helped to carry sand for concrete and more than 200 people cooperated. The teacher and students are glad to have a new toilets in their school. We learned when we build toilet holes we had to dig for two time because of the soil is combine with sand than we had to used concrete ring to stronger and safe for future. They said thanks to Gyaw Gyaw and sponsor who give money for helped them to got more toilets their school.



Meeting with village leader to plan the work. Different ideas of how the sewage should be made, resulted in work done twice.



Teamwork, building a teamhouse.

After we finished we still can not cross the border, the team that come from camp and Myanmar got lock down and cannot go back to their family. We discuss with team how Gyaw Gyaw can help the family, we made discussion to make a team house for team member who did not have home to stay in village. We did decision with Line and Jae to design for us and we weave bamboo to be appropriate for wall and handmade stone wall outside so it get smooth. Some difficulty was finding materials that we needed for building because we legally cannot transport timber to Thai side, but we find solution and finally we finished team house.

All this difficult year we get by with strength and trust. Sometime we have no chance to choose what we have on our plan, but when we consult together we can solve the problem in the better way. Thanks to our leader of Line for loving us like her child, care for everyone and understanding in hard situation and again she stand for sponsor to keep going. Thanks to Jae and Denial for giving your time, make Gyaw Gyaw to learn new techniques and to improve experience by learning new design.

For a year we learn from on our work, the architects are learning by education and team member are learning by experience, but together we build understanding and find solution. Hope that we can keep our best position and go forward in future building. Thanks to everyone in Gyaw Gyaw. Thanks for having time together, in difficult time to meet in one room, but we are family to give strength each other when we get weak.

Thanks to sponsor for never give up to support Gyaw Gyaw, for your help we can keep going for our future project. We are guiding for next generation to understand we can be together even when we are different in nationality, but we can build our better future together.

JAE-YOUNG LEE

architect



Photo: Line Ramstad



Photo: Line Ramstad

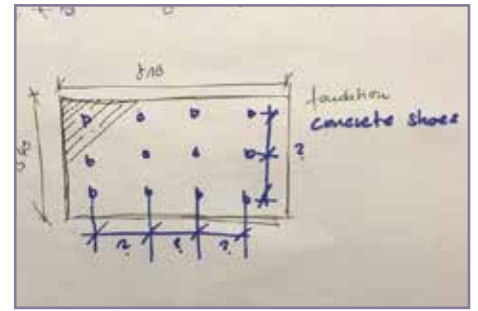
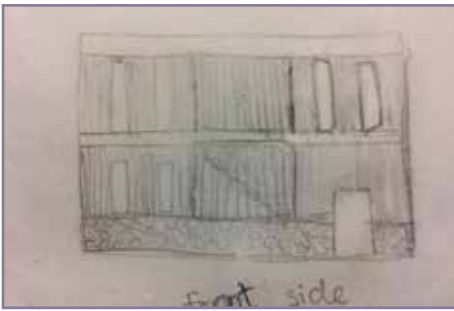
Jae-Young Lee is a most talented architect, and also masters the skill of communication across languages and cultures to an excellent degree.

The past year has left me speechless with gratefulness and awe for my wonderful colleagues but also very much worried at the same time regarding Covid.

After our last workshop in February 2020, while Thailand was already preparing for a pandemic, little did we know, that we all wouldn't be able to be together for a longer period of time than usual. Even though I enjoy our common time at maximum capacity every time, I promise, next time I will appreciate it even more!

Since then, Gyaw Gyaw accomplished the three Kler Moo Kee classrooms, a teacher house, Two Classrooms and one teacherhouse for Tee Tu Ko and a team house in Noh Bo: a total of 8 buildings. Besides the remarkable the new levels of handicrafts, detailing and material knowledges that the team acquired, I think what strikes to me the most is the new levels of cooperation and trust in eachother: While the situation rapidly worsened in Europe during the year and the European branch of Gyaw Gyaw went into Lockdown in Norway and Germany, Paw Eh Wah steered the way through by making flexible plans, adjusting to changing security-situations at the border. With the first closed border and villages she quickly made up a plan to build a team house on her property close to her current house.

With this decision, she took a great deal of additional responsibility to not only provide us all with work to keep going but also made herself vulnerable by offering herself as owner. With Line's and Paw Eh Wah's firm stance on transparency and integrity, she used her private money to provide for materials and guided us through a next level GyawGyaw co-production process: Paw Eh Wah had already done some sketches, Line and me added onto it and with the team on the ground, new levels of detailing and material-possibilities were found. Gravel-enforced concrete retaining walls were experimented with to create different kinds of surfaces and intricate bamboo weavings were used to cover the walls and share the work-load with more people in the village. After completion, with the commitment of the team to stay weeks at a time away from family, the construction site on the other promised projects for the villages took place until completion of the classrooms in Ti Tu Koh.



I for myself, I realized once more how strength, patience and trust are not only crucial pillars for GyawGyaw but also how it is important to keep and train those qualities in oneself and as a team. The weekly calls with Paw Eh Wah and Line have become a highlight to me and I miss them both, as well as my colleagues on ground very much and am counting the days, until health care and political safety will be distributed more equally among us.

So – looong story short: It has been a bumpy year indeed, but I am hopeful and thankful for my colleagues and my wonderful leaders and their decision to keep going step by step and I will do my best to remain close by their side!

PROJECTS 2020



All amounts are indicated in Norwegian Kroner (NOK)
Average conversion rate for 2020 was 333 THB/ 100 NOK.
Actual project costs may vary due to currency exchange rate fluctuation.

DORMITORY II

Gaw La Heh Primary school





Our projects for Gaw La Heh Primary School in Je Po Kee Village

The Je Poe Kee village resides along the Burmese side of the Moei river and after repeated attacks from the Burmese military, was for many years left abandoned. For years the remnants of the village were hidden in the dense jungle, but in 2008, a few people moved back. Among them a headmaster, who started the Gaw La Heh Primary school, and placed it at the center of the community's reconstruction.

We started the first project in the village of Je Po Kee in 2016. We had been following the school and village for a while and it was clear that this was a school where the headmaster and the village management worked well together. The school is run by the Karen Education Department who have also contributed with facilitation and input along the way.

We have now completed six freestanding classrooms that form a single school building under a one continuous roof. They are in full use during the day by the school and can be used to for community events in the evening by the villagers. With the school attendance now reaching 200 students and of these, approximately 100 students needed housing, it was logical that Gyaw Gyaw's next step was to provide dormitories.

The first dormitory was completed in 2019 and now the second has been completed in 2020. The second dormitory follows the same design as the first one and is adjusted to the landscape, climate, and local culture.



Photo: Vincenzo Floramo

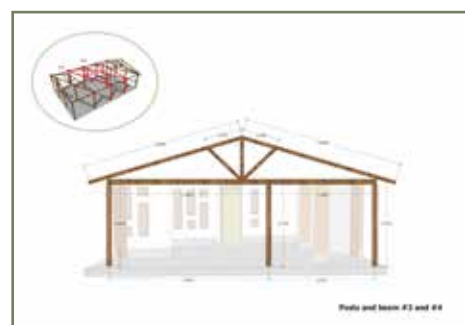
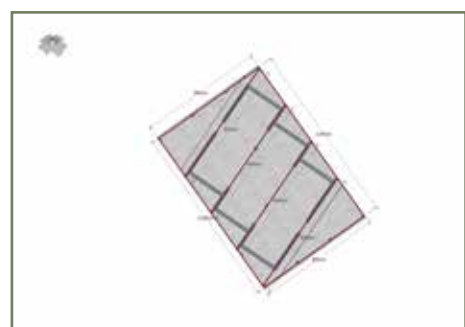
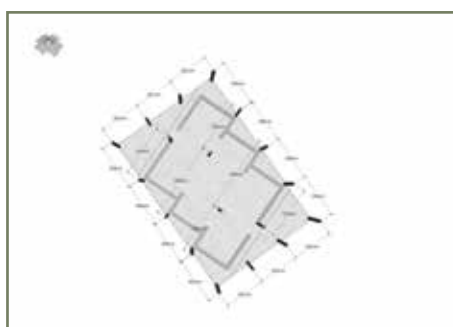
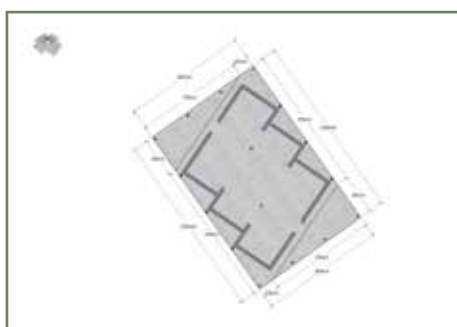


Gaw La Heh school compound. Built by Gyaw Gyaw 2016, 2017 and 2018 + dormitory from 2019. Design by Line Ramstad



DORMITORY II FOR GAW LA HEH PRIMARY SCHOOL

Project budget:	87 415,- NOK
Project costs:	68 090,- NOK
Size:	96 square meters
Project period:	12 weeks: Jan-May, excluding adobe production done in 2019
Architect:	Line Ramstad
Project management:	Paw Eh Wah
Head of construction site:	See Da Pah
Gyaw Gyaw team:	Phillipa, Pah Me, Kee Kee Pah, Pa Da, Ste Pha, Saw Dee
Project staff/feedbacks:	Jae-Young Lee, Daniel Evensen





The dormitory is one open room, divided into six smaller cubicles that are all twisted 20 degrees on the rectangular slab. The twist leaves each cubicle with a semi-sheltered area with a bed that is 2 x 2 meter and adjusted to the one size fits all mats that are available along the border. Each bed is adapted to two older or three younger students.

The overall design is climate and landscape adjusted and the symmetrical twisted walls block direct sunlight from reaching inside. The windows allow for air to flow across the whole dormitory in one direction while still providing security and privacy from the outside. With increased space to host students and a separate dormitory for boys and girls, the school is now better able to accommodate students from surrounding villages.

CLASSROOM II + III + TEACHERHOUSE

Kle Mo Kee Heh Primary school





Kle Mo Kee Village with the school placed as pavillions in a sidevalley.

We have designed and built three new classrooms and a teacher house for a primary school in the village of Kle Mo Kee. In a straight line, the distance is not more than 5 km from Noh Bo to Kle Mo Kee, but in the mountainous jungle landscape, the distance is much longer. Previously, the village was only accessible by foot, but in recent years, a dirt road used by the military has made access easier.

The school is run by Teacher Training College (TTC), which is a collaboration between a university at New Zealand and some educational institutions along the border. In addition to teacher training, they have their own schools, where teachers do their internships and potentially secure a job after graduation. Kle Mo Kee is one of these schools.

For Gyaw Gyaw, this was the first project where all three architects, Jae, Daniel, and Line, designed separate classrooms to be unified under a set of design principles. After two site visits, discussion and feedback from the village, the school, and the team, we had a joint brainstorming session and developed the set of design principles that we then each based our classroom on.

The classroom Daniel designed, was constructed in the fall of 2019, while the classrooms designed by Jae and Line were constructed in the spring of 2020, just before Covid closed the border.



Photo: Line Ramsled



Photo: Phaw Reh Mo



Photo: Phaw Reh Mo

Kle Mo Kee three classrooms, designed by Daniel, Jae and Line



CLASSROOM II FOR KLE MO KEE PRIMARY SCHOOL

Project budget:	65 961,- NOK
Project costs:	35 732,- NOK
Size:	44 square meters
Project period:	6 weeks + preparations from the village
Architect:	Jae-Young Lee
Project management:	Paw Eh Wah
Head of construction site:	See Da Pah
Gyaw Gyaw team:	Phillipa, Pah Me, Kee Kee Pah, Pa Da, Phaw Reh Mo, Saw Dee
Project staff/feedbacks:	Line Ramstad, Daniel Evensen

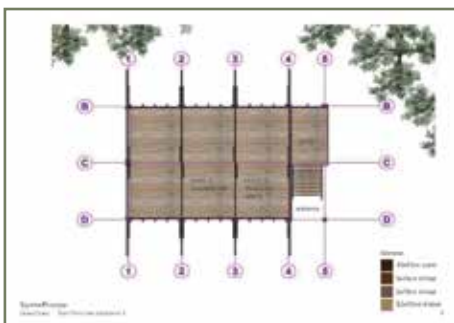




Photo: Phaw Reh Mo



Photo: Line Ramstad

Kle Mo Kee, Classroom II



Photo: Phaw Reh Mo

CLASSROOM III FOR KLE MO KEE PRIMARY SCHOOL

Project budget:	72 011,- NOK
Project costs:	34 356,- NOK
Size:	44 square meters
Project period:	6 weeks + preparations from the village
Architect:	Line Ramstad
Project management:	Paw Eh Wah
Head of construction site:	See Da Pah
Gyaw Gyaw team:	Phillipa, Pah Me, Kee Kee Pah, Pa Da, Phaw Reh Mo, Saw Dee
Project staff/feedbacks:	Jae-Young Lee, Daniel Evensen

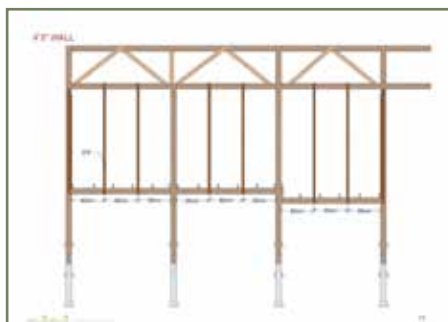
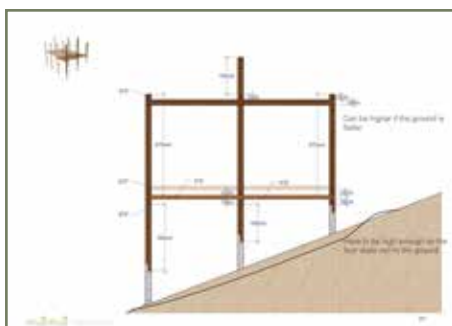




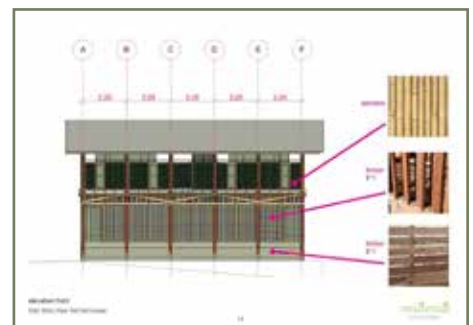
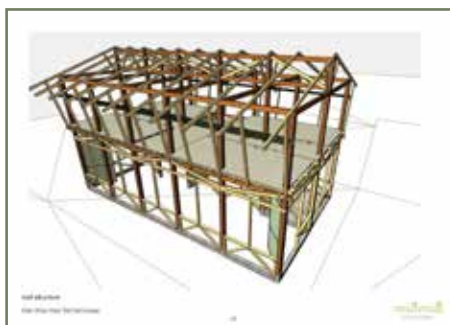
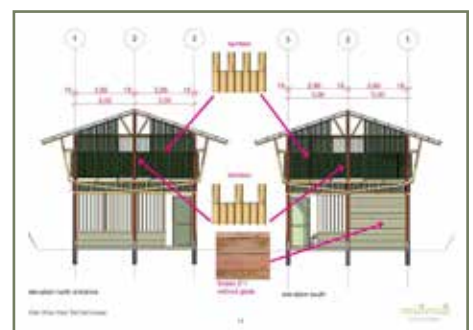
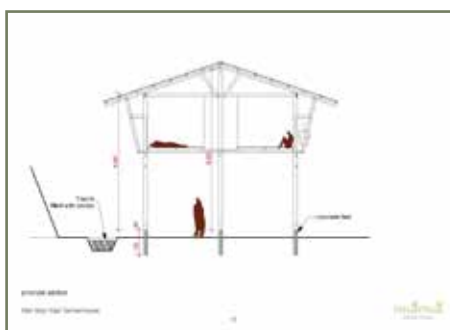
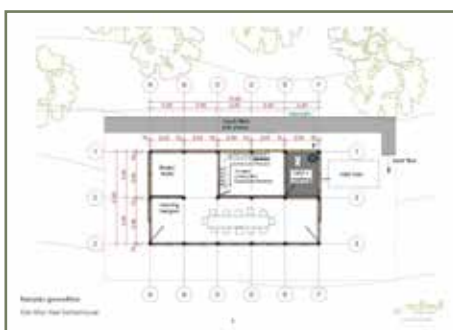
Photo: Phaw Reh Mo

Kle Mo Kee, Classroom II



TEACHERHOUSE FOR KLE MO KEE PRIMARY SCHOOL

Project budget:	120 116,- NOK
Project costs:	34 265,- NOK <i>Completed in 2021. Totale costs 114 199 NOK.</i>
Size:	44 square meters
Project period:	Transportation of materials + preparations from the village
Architect:	Jae-Young Lee
Project management:	Paw Eh Wah
Head of constriction site:	See Da Pah
Gyaw Gyaw team:	Phillipa, Pah Me, Kee Kee Pah, Pa Da, Phaw Reh Mo, Saw Dee
Project staff/feedbacks:	Line Ramstad, Daniel Evensen





Headmaster and teacher Ah No in Kle Mo Kee.

The teacher house is needed because teachers are often not from the village but live there almost on a permanent basis. It had to be large enough to host teachers in training who stay for months at a time doing to their internships as well as the family of permanent teacher if they choose to move there. Therefore, a flexible design was required.

The teacher house has eight private bedrooms on the second floor as well as a small common area. On the ground floor there a large common area that can be used for meetings as well as a toilet and laundry area.

The process leading up to the design and construction of the classrooms and teacher house was characterized by a close cooperation with the school and village and a lot of feedback and input from them.

The construction of the teacher house was significantly delayed due to the closed border so while the materials were purchased and transported in the spring of 2020, construction was not finished until March 2021.



Concrete feet, roof and screws were bought in a nearby town. Timber post, planks and bamboo, are prepared by the villagers.

TOILETS

Noh Bo Primary school





Noh Bo is our hometown. Since the start of Gyaw Gyaw in 2009, we have implemented numerous projects for a broad variety of local stakeholders, building a trustful and steady relationship with all and breeding the ground for a safe work environment.

After we finished two classrooms for Kle Moe Kee school, we prepared to build a teacher house for the same school after our rainy season holidays. With the Covid 19 situation being worse inside Burma, Thai military did not allow us to cross the river, so we had to make a second plan for the team. We decided to make new toilets for the Thai school in our Noh Bo village.

At that school, they have more than thousand students, but they just have only a few toilets and we decided to make this our next project while waiting to continue our work in Kle Mo Kee when the river can be crossed again.

So, in September, after our holiday, instead of a new teachers' house in Kle Mo Kee, we started our work to make new toilets for the Thai school in Noh Bo.

When meeting with the village leader and school headmaster we explained how Gyaw Gyaw works and how we cooperate with community. We asked them to contribute by carrying sand and digging the holes for the toilet. After much discussion and designing, we had come to an agreement on the budget but there were still some differences in the idea for the design. The village leader wanted one long trench under the toilets reinforced with concreted and at first, we attempted this.

However, it quickly became apparent that because of the continuous heavy rain and constant collapse of the soil, we would have to dig the latrine in sections and reinforce each hole with cement rings and cement which is common practice here.

We constructed 10 toilets which increased the total number from four to fourteen, for the nearly 1,000 students that attend the school.



TOILETS FOR NOH BO PRIMARY SCHOOL

Project budget: 28 669,- NOK
 Project costs: 35 335,- NOK
 Size: 30 square meters
 Project period: 5 weeks

Architect: Gyaw Gyaw team
 Project management: Paw Eh Wah
 Head of construction site: See Da Pah
 Gyaw Gyaw team: Phillipa, Pah Me, Kee Kee Pah, Pa Da, Phaw Reh Mo, Saw Dee
 Project staff/feedbacks: Line Ramstad, Jae-Young Lee, Daniel Evensen



TEAMHOUSE

Noh Bo Village





Paw Eh Wah has a small bananagarden in the outskirts of our village. This was where we planned a teamhouse many years ago, and where we now decided to

The plan for the winter of 2020/2021 was to complete a house for teachers in Kle Mo Kee and then build two classrooms and a house for teachers in the village of Tea Du Koh, a village a little further away into the mountains.

After a new wave of Covid put work on hold, and military activity in the area increased, we had to change our plans and agreed to realize an old idea of a separate team house in the banana garden of Paw Eh Wah. It is not a guest house, but a house where the team members who do not have their family in Noh Bo, and otherwise other visitors, can stay overnight.

Since circumstances forced us to quickly change plans and pick up an old idea, we began construction without complete drawings, but with sketches Line had made in 2014 as a basis. These were further elaborated upon by Jae and while the team was working, she developed and adapted the design based on the materials we had available.

The rule is that when we work for private, the materials are paid by the owner. Salary, food and transportation is covered by Gyaw Gyaw. Since the property in this case is in private ownership by Paw Eh Wah and her family, this rule was followed, but with the special circumstances applying the project and the great advantage we as a team got from it, some of the material costs were also paid by Gyaw Gyaw.

During this period, it was uncertain when the border would reopen and when the planned Gyaw Gyaw projects could be undertaken again. The unpredictability forced us to use this period and project to improve our communication of design and construction across three countries and multiple time zones. Because of this, the team house had multiple adjustments and iterations and eventually became far more elaborate than first envisioned. This also resulted in a better understanding of digital meeting tools and applications by the designers as well as the team on the ground.



TEAMHOUSE NOH BO

Project budget:	0,- NOK
Project costs:	42 582,- NOK (+ 46 407,- NOK in 2021 = total costs 88 989,- NOK)
Size:	45 square meters
Project period:	11 weeks (+ 9 weeks 2021 = total 20 weeks)
Architect:	Gyaw Gyaw team
Project management:	Paw Eh Wah
Head of construction site:	See Da Pah
Gyaw Gyaw team:	Jae-Young Lee, Line Ramstad, Phillipa, Pah Me, Kee Kee Pah, Pah Da, Phaw Reh Mo, Saw Dee



WORKSHOP

Noh Bo Village and surroundings





WORKSHOP 2020

Project budget:	0,- NOK
Project costs:	12 194,- NOK + planetickets Gyaw Gyaw 17 736,- NOK)
Project period:	1 weeks
Participants:	HENT: Henrik Bakke Gyaw Gyaw: Jae-Young Lee, Line Ramstad, Paw Eh Wah, Phaw Reh Mo, Saw Dee, See Da Pah, Phillipa, Pah Me, Kee Kee Pah, Pah Da
Goal:	Knowledge exchange with our sponsorcompanies, evaluation of old projects and planning of new. Teambuilding and creating a common ground for the next years.



Results and budgets

RESULTS AND BUDGETS

* All numbers in NOK

INCOME

	Operating revenue			Budget		
	2020	2019	2018	2021	2020	2019
Corporate Sponsorship	535 558	508 000	543 864	438 000	438 000	352 000
Regular Monthly Private Donations	21 000	20 350	21 400	20 000	20 000	21 400
Lump Sum Private Donations	17 506	5 750	6 000			
Interest	1 387	2 095	1 207			
Sum operating revenue	575 451	534 259	572 471	458 000	458 000	373 400

EXPENSES

	2020	2019	2018
Projects (see project costs for details)	252 347	221 596	203 516
Running costs Noh Bo	47 068	86 922	59 217
Equipment/car/bike	20 151	32 618	21 411
Workshop	12 194	12 771	11 420
Support	11 831	5 905	6 817
Operating expenses Noh Bo	343 591	359 812	420 533
Running costs	25 515	12 200	12 818
Equipment	0	37 947	9 231
Travel Workshop + Architects*	17 736	46 614	62 323
Operating expenses Norway	43 251	96 761	84 371
Sum operating expenses	386 842	456 573	386 752
Net result	188 609	77 686	185 719

* Tickets to workshop in January 2019 were partly paid in 2018.

ASSETS

	2019	2018	2017
Estimated: Vehicles, computer, camera, tools, machinery, materials.			
Fixed assets	150 000	100 000	151 000
Bank Deposit Norway	902 685	763 925	515 306
Bank deposit Thailand	30 796	21 694	53 959
Cash	7 058	37 134	10 280
Current assets	940 539	822 753	579 545

PROJECT COSTS

Projects	Cost	Budget
Gaw La Heh Dormitory II	68 090	87 415
Kle Mo Kee Classroom II	35 723	65 961
Kle Mo Kee Classroom III	36 353	72 011
Kle Mo Kee Teacherhouse*	34 265	120 116
Toilets Noh Bo Primary School	35 335	
Team house	42 282	
Sum project costs	252 048	

* Completed 2020. Total costs 114 199 NOK. Budget for total project cost.

Actions	2020	2019	2018
Salary	110 624	104 129	94 092
Materials	114 156	83 382	79 698
Food	22 108	18 107	18 503
Transportation	17 654	15 978	11 223
Sum actions	264 541	221 596	203 516

Comments to the result

For 2020, we have spent less than budgeted, but the projects implemented, are to a greater extent than normal, projects we did not plan to implement this year, or not planned for at all. We have also postponed projects planned for an indefinite time.

Do no harm has been an overall mantra and goal through Gyaw Gyaw's 11 years history. A financial security through program based, long term agreements with trusted sponsors have been the core of this. That the money is given to us as an organization to utilize for the best according to our statutes and plans, but with possibilities to adjust to changing situations, have been incredibly important for the successful results, and for our security.

With covid making the situation more unpredictable than ever, bringing also new challenges to the table, many organizations in our area have been forced to close their businesses. It did not improve the situation that the election in November 2020 increased the military tensions from Tatmadaw's, the Burmese army's, side, building up towards the February 1. Military Coup in 2021.

Being a small and well-organized organization with flexibility to adjust which project to implement when, has been a key to keep our work going in a safe manner in this challenging period. This has not only been important for us as a team and for the single team members, but it has also sent signals of hope and opportunities to a greater area.

With 1000 students sharing four toilets there are no doubt that 10 new toilets for the Primary School in Noh Bo was also a much need project, even if it was not planned.

The toilets and team house have also been a great arena for increased confidence and internal learning in our team, so all in all, the year have resulted in great results.

SUPPORT

As members of a local community where there are no governmental budgets for community infrastructures, each member of the village must contribute for the best for each neighborhood. As a recognized, and a significant participant in both our own village and the villages where we work, our commitments as private persons and as a team must be maintained. We often solve this by implementing community structures like wells and improve roofs at schools and community buildings etc, but sometimes we also support with food and needed equipment like blankets and mosquito nets to people in need.

To show respect for the community structure and its participants is also important for our standing in the area, for our opportunities and our security.

Total amount spent on support in 2020 is 11 831,- NOK

Our education fund is for the children of our team members and other children in that area that through their skills manage to get into higher education, or to students that get opportunities for basic education in schools that gives papers that afterwards can open doors for further education. From a western perspective, this sounds like something to take for granted, but in our area, with the majority being stateless and without papers, higher education above primary school is rare and supporting the children with skills that might make it is the best way to support even more people in the future.

Because of Covid, no one has started any education this year and the money donated is 0.

Since 2009, we have also supported our good friend Tasanee and her Safe Haven Orphanage. This is a support system by itself, where the money is paid to a separate account from private sponsors and transferred every month to Tasanee for her to use for the best for the orphanage. The responsibility for this will from 2021 be transferred to Ole Michelsen and his PlayOnside organization that works with children and youth along the border.

Total amount transferred to Safe Haven Orphanage in 2020 is 50 057,- NOK

Prospects 2021



Gyaw Gyaw architect meeting with Paw Eh Wah in Noh Bo, Line in Årnes, Norway, Daniel in Oslo Norway and Jae in Berlin, Germany.

It's never been harder to predict how the next year will be, but based on the experiences from 2020, we know for sure we are organized and have a framework around our work that is strong enough to deal with most.

That said, we hope 2021 will bring less surprises along. Our projects planned are to continue the team house in Noh Bo. We will also build the teacher house in Kle Mo Kee, designed by Jae, that we had to leave and where the materials and the villagers are waiting for us. Then Daniels design in tea Du Koh will finally be implemented. We are excited to see the two classrooms and the teacher house there being completed. It is a new village for us, and since it's a village, really hidden in the dense jungle, high up in the mountains, the collaboration will be an exciting process.

We also hope to start a project in another new village named Mae La A Tha. This is a village further south for Je Po Kee, the village where Gaw La Heh school is situated and where we have built six classrooms and facilities over the last four years. Mae La A Tha village is an old village, on a more flat and easy accessible area, close to the Thai border. They have a school in the village where 7 classes are sharing one large room. The village have now gotten hold of a property a little outside of the village and want to build new classrooms and a teacher house there.

With Covid seeming to hold a grip over the world a little longer, we have no travels or workshops planned. We hope for it to happen, but the last months have shown us that we are a functional team with Paw Eh Wah as the glue in Noh Bo, the team on building site, Jae in Berlin and Line and Daniel in Norway. Our weekly meetings are highly valued and will be continued.

Thank you HENT, Vestre, Asplan Viak, Baias, Rotary and Agraff. And thank you to friends and family that also support us. Without you, none of this would have been possible. THANK YOU for believing in us, for trusting us, for giving us the opportunity to learn, to develop and to continue to work for the schools in our area where we, with your help, can make a difference.

On behalf of Gyaw Gyaw,
Line Ramstad

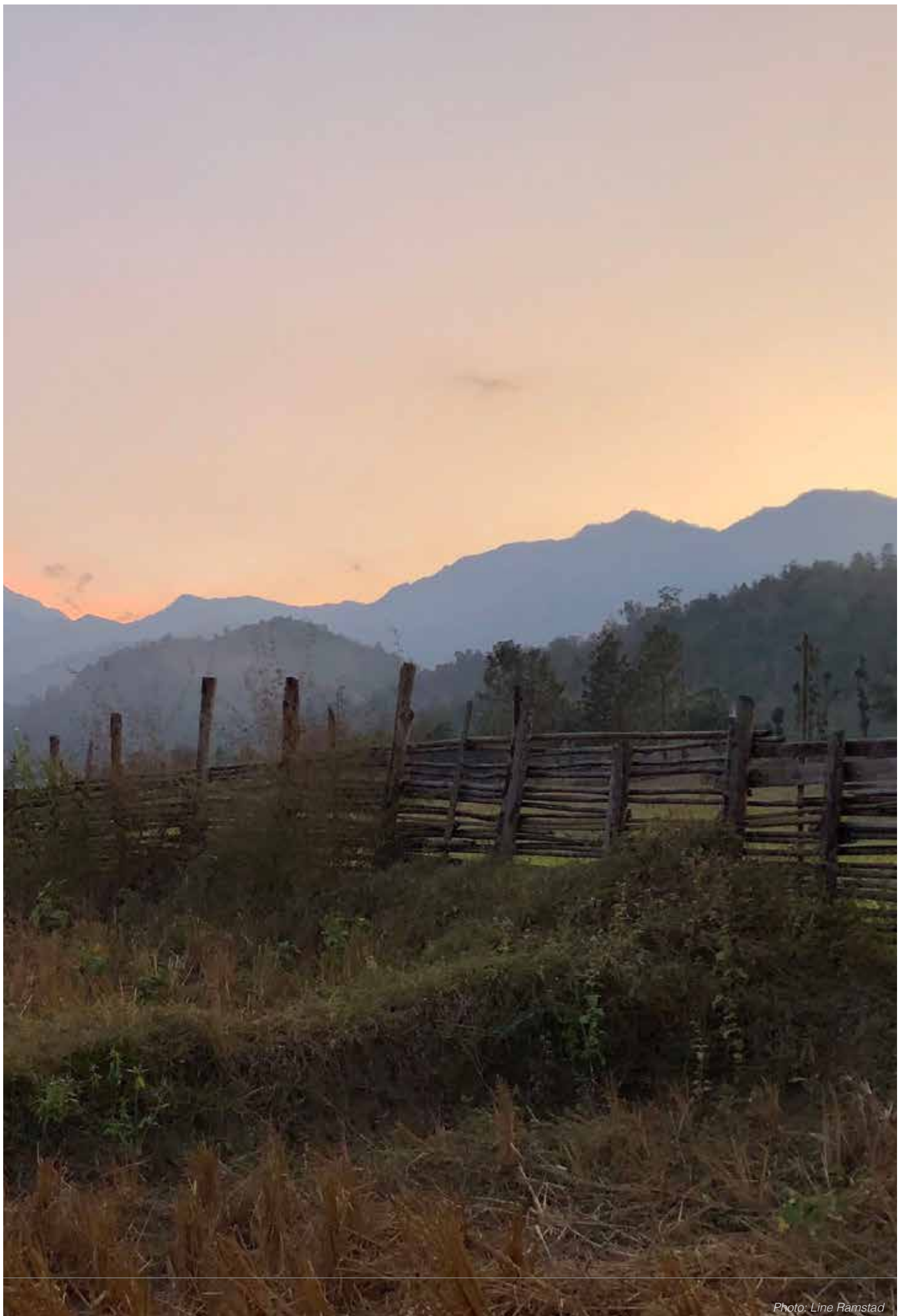


Photo: Line Ramstad