

Gyaw Gyaw

Annual Report
2021-2022



Dear everyone

For the first time in Gyaw Gyaw’s history, this annual report covers two years at the same time. The organization is going very well and has developed enormously during this period. Figures and information have also been shared with our sponsors along the way, but to make this report have been my responsibility, and with a full-time position as planner in a Norwegian municipality next to running Gyaw Gyaw this period, daily tasks have been prioritized.

With great help from Maiken Johansen, graphic designer at HENT, this report is finally ready and also of a much higher quality than before. With text support from her colleague Kristine Oftedal Iversen, Maiken is also playing a very important role in the ongoing remaking of our webpage. Finally, our work and philosophy are being presented in a way that does our work justice. Old projects are still to be posted, and new ones are continuously being designed and built, so stay tuned for consecutively updates.

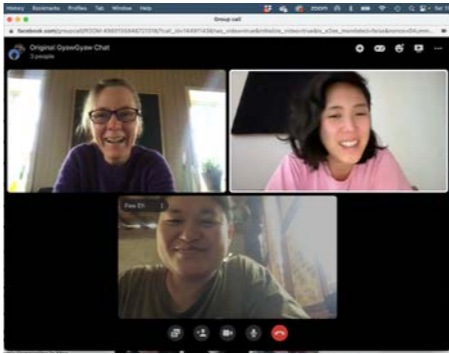
But first, I am proud to present our amazing team and the work that has been done over the last few years.

When architect Jae-Young Lee (Jae) and I left Noh Bo in February 2020, the word “pandemic” was not yet something we had to deal with, and little did we know it would take more than two years before any of us could return.

Fortunately, the internet came to our village before Covid, and with Jae in Berlin, Paw Eh Wah in Noh Bo and me in Nes, we quickly established a weekly routine of Messenger meetings that we still maintain. These meetings have been urgent to keep the work going, but also a joint weekly highlight for the three of us.

Our weekly meetings have also been great eye-openers about how different populations are valued differently in a global perspective.

Where Europe rapidly established routines for social distancing, face masks, hand disinfection and then got the best vaccines, the situation at the border was of a different nature. In Thailand, almost everything shut down and the lack of work, money and food become



a huge struggle. For most, a much bigger struggle than Covid. Schools were also closed for a whole year and children were at home without the opportunity to continue their education.

When the vaccines finally arrived, long after we were offered our second dose in Norway and Germany, they were of uncertain origin. In an area where the authorities often seem to be more concerned with how it looks than how it works, people were naturally concerned. Most likely, the first vaccines offered along the border were surplus vaccines from China or Russia, or even from the Indian black market. Not until Astra Seneca vaccines were banned in Europe did the border area receive an offer that Gyaw Gyaw felt confident accepting.

On the Burmese side, life continued more or less as before. There were strict restrictions on any border crossing, and villagers were theoretically not allowed to travel between villages, but in the small villages where Gyaw Gyaw works, people live from hand to mouth and

not to harvest their fields or hunt in the jungle was out of the question. Local markets also operated as before, and vaccines were rare.

And, the military situation was tense. After years of slow democratic development, the last election in November 2020 was a true declaration of the people’s desire for further democratic progress. The National League for Democracy (NLD) won another landslide, and the military leaders became jealous. At least, that seems to be the only plausible reason for the military coup on 1. February 2021. A forced seizure of power that has led Burma into a new and dark era of dictatorship with General Min Aung Hlaing as leader.

It is both surprising and not. Despite operating under a non-democratic constitution that ensured the military all power, the civilian government, led by NLD with Aung San Suu Kyi in charge, managed to slowly transform the country in a democratic direction. The first signs of this started in 2010 and an entire generation have experienced a slow turn

towards a society with freedom of speech, access to education, and opportunities to travel. But, behind it all the military held all the cards. They basically had everything, apart from the popularity of the people, and the only plausible reason for the coup seems to be precisely jealousy and a desire for even more extreme personal financial enrichment.

And amidst Covid and a military coup, Gyaw Gyaw have grown and developed. It has been a period of huge personal and organizational growth. Paw Eh Wah has shown wonderful leadership skills and is today a highly respected leader in our region. Coupled with Jae’s amazing design and perfectly tailored collaboration, and the team’s amazing skills and great teamwork, our projects have reached new levels. All possible because of local stakeholders, teachers and villagers who have contributed greatly to each project. And all thanks to our wonderful sponsors who make our work possible!

For me, as the founder and director, I can only shout how incredibly proud I am of my amazing, strong, and



highly respected team, of the schools and villages we work with and of our long-term sponsors who see us for who we are and support our way of working.

It was difficult to be kept at a Covid distance for more than two years, but we used it as a strength and my role going forward is now at a more strategic level. I will be a Loeb Fellow at the Harvard Graduate School of Design for the next academic year and will take every opportunity to talk about my colleagues, our work, and our sponsors. Hopefully it can also inspire other small organizations to use architecture as a tool for sustainable development and do no harm, all over the world.

Line Ramstad



Our board

Our board for the period has been Landscape architect and Librarian Christine Riiser Wist and Architect Solveig Dahl Grue.



Christine Riiser Wist



Solveig Dahl Grue

Our team



Paw Eh Wah



Bee Bee



Jae-Young Lee



Kee Kee Pah



Line Ramstad



Nee Eh



Pah Da



Pah Me



Phew Reh Mo



Saw Dee



See Da Pah



Phillipa

2021 – 2022

A time with difficult pandemic and military coup inside Myanmar, but powerful years for G' yaw G' yaw.

In this difficult situation we have moved forward, kept our promises to agreed about projects and made sure all team members have enough work to sufficient support their families. We are very careful and aware around the security for the team when they work in dangerous areas. Before we go to work we discuss suggestion for everyone to agree because we can give the things that they need, but we cannot give their lives. All our planned and promised projects are inside Myanmar boundary, but with Covid lock down and civil war, we have chosen to work on the Thai side, in Noh Bo village, for places that need support there instead. Thank you to our sponsors that support us so we can keep working for others in need and at the same time adjust to the situation.

In our team we have three team members who cannot go back home, and when Covid lock down first happened, we decided to make a team house so when they are in Noh Bo, they can stay in team house to have a safe life. This was started in 2020 and we continued in 2021. Design is drafted by Line and Jae, and the team made next level for next step. The building materials is paid by Paw Eh Wahs family and for the rest is paid by G' yaw G' yaw. The time we build this house, we did not have enough materials needed for the building and had to be creative. We learned a lot about construction design and we improved our details in building structure and learned how to wave bamboo in patterns.

The next project we had planned was Kle Moe Kee teacher house, but before we could start, we had to make sure the environment was safe for our team to work with the community there. Covid was already a problem, but then, on February 1st 2021, a military coup happened inside Burma and a new civil war

started. It came as a huge surprise to most of the world, and many people who lived inside the country had to run to the borders, to areas that was close to neighbor countries, so when something happen they can cross. Unfortunately, Thailand does not allow the refugees to move across the border, but only some who have friends and family there, can stay with their friends and have a better life. It is long story to talk about the coup in Burma and some is also presented in the news. Luckily our G' yaw G' yaw organization is safe. Most of our team members families are already on the Thai side and even if our projects are inside Burma, the villagers that we work with also protect us and give us right information before something happen in their area, for our teams security.

After we finished Team House we add one trainee in G' yaw G' yaw because we need young man. His name is

Be Be, he helped to climb up the high place on building and carried weighty materials. He learned from team how to measured, and read design from architecture.

We finally could start Kle Moe Kee teacher house for girl teachers. Most of them come from inside Myanmar. They have followed training by Teacher Training College (TTC) from New Zealand who has a great program. After two years of study and two years training, they can teach full time for school. Kle Mo Kee village is in the jungle, the villagers have no education, and the students' parents was earlier not aware of the value of education. When TTC came to the village, the villagers were first reluctant, but now they have a good school with good education in each classroom and the environment around the school understood that actual learning is the most valuable when you study, not only repeat what the teacher say. The village have now

the best school in the border area and many neighbor villages send their children to Kle Moe Kee school because of its good education.

We have made three classroom for Kle Mo kee, the last was completed in 2020. This year we promised to build a teacher house. Most of the teachers live at school and two times every year, they also have teacher students living with them, doing their practical training at this school.

We have made a bigger building with two floors, the first time in G' yaw G' yaw history. The building is designed by Jae. She understood what the people who will live in the building need and what is required for them to have a safe life. The building is nice and cool and light inside, the first floor with toilet room, library room and meeting room. On the second floor



is sleepingrooms. The teachers are grateful for G'Yaw G'Yaw that made the building for the teachers and thankful for the sponsor who has contributed to give them the opportunity for a safe house and a good life. For Gyaw Gyaw, through this process we have learned more about building structures and how to make many rooms in one house with timber and bamboo. We now also know more about how to prepare bamboo in the right season.

After we finished Kle Moe Kee teacher house we went to the next promised project that was for a village call Tea Du Koh. This village is near to Kle Moe Kee village. They have a kindergarten, and grade one to four. The village had one room for five classes together, so we choose to build two classrooms for them to have more space. And again, we also build one teacher house. This is a very small village and some teachers comes from other villages. Earlier they had to live with friends. Before we started the project, representatives from the school and village came to meet G'Yaw G'Yaw. We discussed with them to make sure we would be able to communicate back and forward for right information and made sure all is agreed upon in a contract.

Before we started the project in Tea Du Koh, one of our team members, named Phaw Reh Moo, had to go back to Burma because her mother is old and sick and need

her help. Phaw Reh Mo is the one who cook for team, take care of economics for projects and communicate with the administration to make sure information is given every week by taking building pictures for the designer to follow if it is right or wrong. We miss her and someone to do her job, but we do not let her to quit, she is welcome back when she can come because we need someone to take responsibility the same way she does.

We also got one more new team member this period. He is an educated teacher from TTC that also have experience from building and that is interested in design. His name is Nee Eh and he has been further learning about building and construction from the team. He is a polite man that obey the other team members and follow their instructions and further develop it in close cooperation with the others. He is also a good photographer and document our projects both in process and finished building.

When we started Tea Du Koh, we started with the teacher house and followed up with two classrooms. All are designed by Daniel Evensen. He live in Norway, and designed a jungle building from there, but have been visiting several times. Through this project we have learned the importance of how to produced safe building rather than fashionable design, and again, we



learn how to make another level of implementation and design.

After Tea Du Koh was finished, we had holidays and the team used their time to help their family and to improve their own homes. When holidays were over, it was lock down time again and in our village the people was offered to get vaccinated for covid 19. We chose to wait for better vaccines. We are not sure what is the best to be safe and help, but we cannot manage all team members to be vaccinated because the ones who give the vaccine cannot promise any insurance for our health, they just only test their medication and don't know where it is from.

At the same time as we struggled to get approved vaccines, the military coup was at its strongest and we had to be careful and not work inside Burma. Some of our friends and family had to run to the Thai side to secure their life. The army tried to arrest them and send them to prison because they had been protesting against the military coup. We searched with our team to have work in Noh Bo village instead. A place have for many years asked us to build a dormitory for them, but we have not promised them because our goal is to help more inside Burma. In this hard situation where we cannot travel around, we choose to help them, but not with the dormitory. We started with their need.



With students and the family who take care of them, it is total 45 persons who live together and they only have three toilets. In dry season, they also do not have enough water. We helped them with three toilets, a big water tank and a shower place.

When this project was finished, we finally got approved vaccination for Covid 19, but the lock down continued. We decided to fix Line's Noh Bo home because the bamboo walls were worn down after twelve years of use. The team made very nice bamboo weaving with different kinds of pattern. It is the next level of handicrafts and we will use the same kind of weaving with bamboo for our next projects because it is safe for termites and last longer. We are proud that we are able to use our hard seasons to learn and find better solutions for future projects.

I want to say thank you to Line who love us like her child and that care a lot for us and understand what we need. These years we cannot meet in person but we saw each other on messenger video call. We contact back and forward and organize the work together with our team. Again, also thanks to Line for making sure we have enough money to keep working and do the projects we promise to do. Line is the seed of G'Yaw G'Yaw, and she is an important connection between our team and our sponsors to have a trustful connection. She made G'Yaw

G'Yaw so we can do everything together and improve and work hard to be good role models.

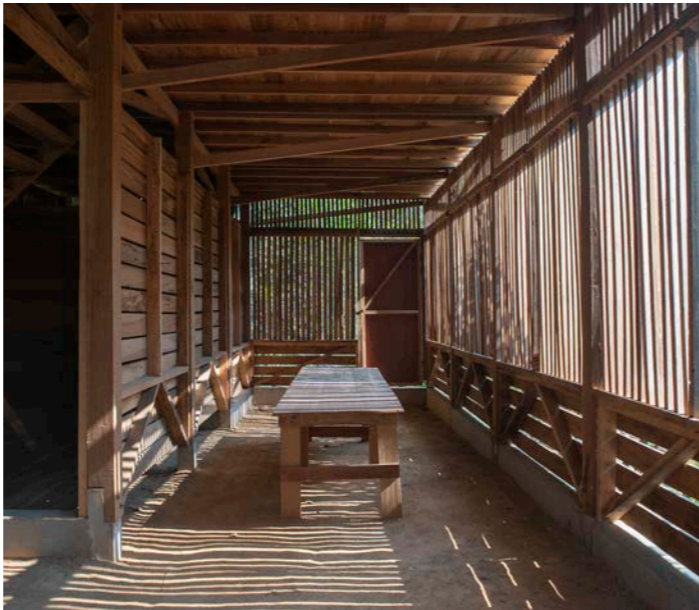
Thank you to Jae for the honor you do to G'Yaw G'Yaw by giving your time and strength and care. Jae is teaching us to make stronger and better buildings. She understand the community life, what the location need and what the team need to learn. All her trust has given us more confidens in building. Her design is what we need and she teach us more and more about construction and make sure it is safe, also from rain and heavy wind. Thank you for being with us and making us grow our knowledge together with you.

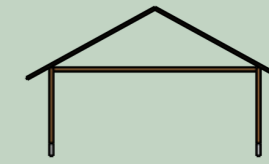
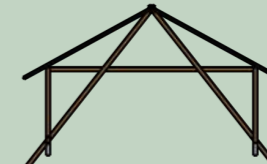
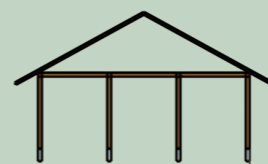
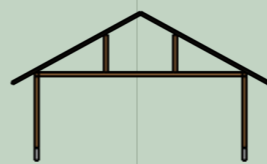
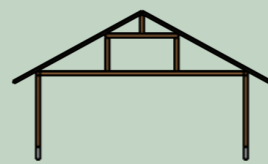
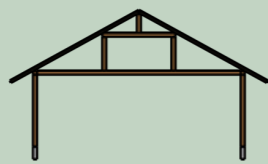
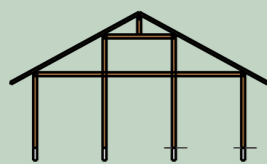
All the things that has happened to us, has thought us to be stronger and strengthen us for the future. It is possible because we have sponsors who understand and support us so we can build up our organization, our projects and our lives. Thank you for giving us the opportunity to have a work that help others in need. Thank you again for keeping us in your mind, like a small part on your table. We are so grateful for the many years you have been with us and supported for us to go forward. We cannot give you much back, but we always put in our mind how important you are for G'Yaw G'Yaw. We need your help because we want to help places in need for schools, dormitories, teacher houses and toilets. We appreciate very much your love and kindness to us. We have made more than 70th building because of your help. We are going to build more buildings in future and again we still need your help. We will improve our knowledge and do our best, like a good mirror that everyone need.

Thank you to everyone who belong to G'Yaw G'Yaw family. I hope for this year to be safe and healthy for everyone, today and for the future. Will happiness be with us and peaceful in each of our family and works. Love you all in my heart.

Paw Eh Wah

မိုးမိုးမိုးမိုး
Gyaw Gyaw





Meetinghall collaborative work

Architecture

It has been such turbulent years! Ever since the pandemic hit and war broke out anew with the Military coup of 2020, I hadn't been able to go to Noh Bo. Hanging by weekly messenger-talks with Paw Eh Wah and Line as well as social media and news outlets navigating through the strategic internet restrictions of the Tatmadaw I could just even try to fathom, what was happening in the region my colleagues were. So, while I was watching from afar in maximum safety, I would observe how over the following 2 years, my colleagues proved patience, focus and empathy while they kept Gyaw Gyaw going.

At times, border crossing was suddenly impossible – sometimes due to Covid, sometimes due to political threats. And it was astonishing to see in the midst of these dark news how the communication between villagers and our colleagues in the field – Pah Me, See Da Pah, Kee Kee Pah, Phili Pah and Pa Dah was a vital instrument to keep safe and keep going. And it was even more overwhelming to watch Paw Eh Wah rise to every occasion and beyond to create more trusting communications and cooperations to each member of the team but also to everybody she encountered on project site – stakeholders and our regional leaders included. With close talks to the team and always with Line in her back, she would create new strategies to keep building, planning and talking to not lose spirit and hopes and even spread some of Gyaw Gyaw's possibilities to the exodus of people being forced to flee their homes. So, despite all of the shadows that came across in these years, major steps were conquered! For one, we started to draw together, design together and share sketches with the users but also the team and Paw Eh Wah, making for even better building solutions! Another milestone was never seen before quality of handcrafts. Fine bamboo weavings were exercised and directly put to use in the projects while we also learned to how do RAMMED EARTH through our friends at Estudio Cavernas, which quickly became the most beloved



technique for all of the team. But the probably biggest change were our wonderful new colleagues we gained through Paw Eh Wah's and the team's sharp eyes and wise hearts: Bee Bee and Nee Eh. With both of them being an ambitious student and a former teacher our team was complimented not only with a huge force of new energy, knowledge, hope and vision but also by extremely talented, smart and funny new colleagues drawing a future path or all of us.

And while Line used the first opportunity that came along to fly over again after the pandemic, I, in 2022, had to make the bitter decision to wait out for another year since I had just started a new job as a researcher, pursuing my PhD. It was so very bitter-sweet to see all of the team and Line and Paw Eh Wah being together



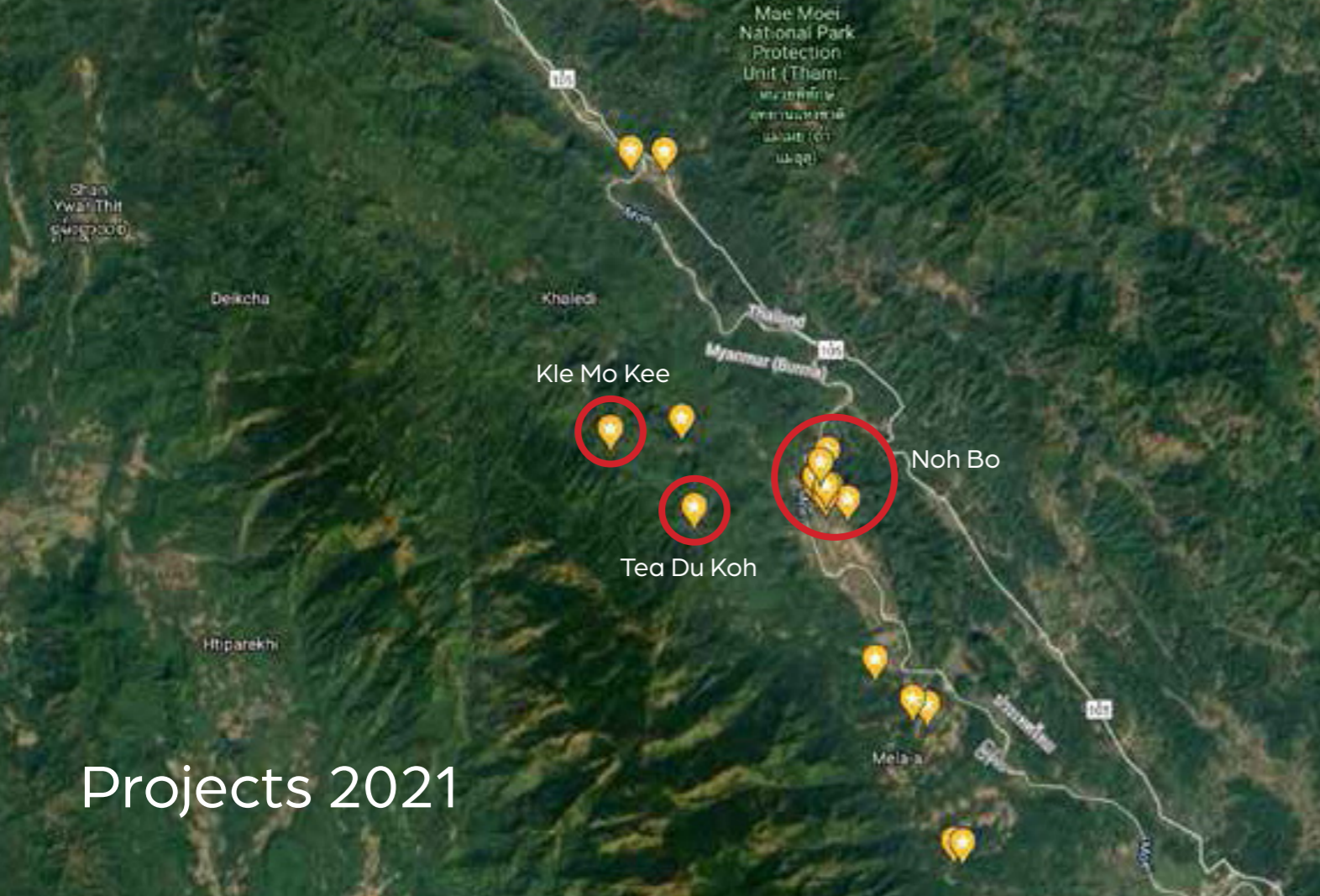
through messenger since it was Gyaw Gyaw in the first place who had inspired me all those years ago to dig deeper into the power of autonomous communities to build their own landscapes and spaces. Without Gyaw Gyaw in my heart at all times, I would not be here obsessing over what "planning" means in a world of unequalness and unrecognized skillsets and planning cultures. And the fact that the team, Paw Eh Wah and Line support me so much in this decision to put some years into exploring this makes me seriously tear up.

Anyhow – in the spring of this year, I finally could be back in No Boh and it really hit me like a giant wave: How much I missed these people, how much I love to work with them, how wonderful architecture is when it



is done with the people for the people and how constant learning and growing together is not only shaping places but mostly ourselves and our fellow human beings. But also, it hit me how far away all of these news and stories sounds – good and bad – if you are not there for a long time. So it is going to be an exciting year to come: Gyaw Gyaw will take on new and bigger projects with new materials, I will try to carve out more time to be on site and learn Karen, while Line will gain more knowledge for all of us and be in Harvard as the amazing and farseeing leader that we all know and love her! I am already so curious about what our next annual reporting will look like.

Signature



Projects 2021

Teamhouse

2020-2021 / 19 weeks / 88 989 kr

Completed from 2020.

A house for team members and visitors to stay. A true teamwork, built during a period with Covid and military coup to keep our work going when most closed down their operations. The project was extensively used to expand our knowledge within design, materials and new techniques.



Kle Mo Kee Teacherhouse

2021-2022 / 12 weeks / 114 261 kr

Timber was bought in 2020, the building built in 2021 and a few improvements were also done in 2022.

A dormitory for teachers in Kle Mo Kee village which have a well-run and popular primary school with actual educated teachers. It contains of sleeping rooms, hangout spaces, workplaces and a bath. We have previously built three classrooms for this school.



Tea Du Koh Teacherhouse

2021 / 5 weeks / 52 212 kr

Tea Du Koh is one of the smallest and most remote villages we have worked so far. They had one classroom for all classes and no place for teachers. The teacher house have rooms that can be used for sleeping as well as storage, it also have a hangout space and an area for food preparations. We also built toilets and washing area nearby.



Tea Du Koh 2 Classrooms

2021-2022 / 10 weeks / 79 878 kr

Built in 2021, further improved in 2022.

The new school area was in a slope, so as the teacher house, the classrooms were built on stilts and adjusted the landscape. It is also designed for natural light and airflow and have a nice breeze and beautiful light inside each room. After a year of use, the school did however experience some rain inside from the gable wall, so improvements were made in 2022.



Joe`s dormitory Toilets

2021 / 4 weeks / 20 174 kr

Dormitory for students from small villages on the Burmese side of the river that attend Academy School in Noh Bo. This is one of few opportunities for education on high school level for students in this area. The dormitory is hosting a little too many students and they lacked both toilets and a place to shower and wash clothes.

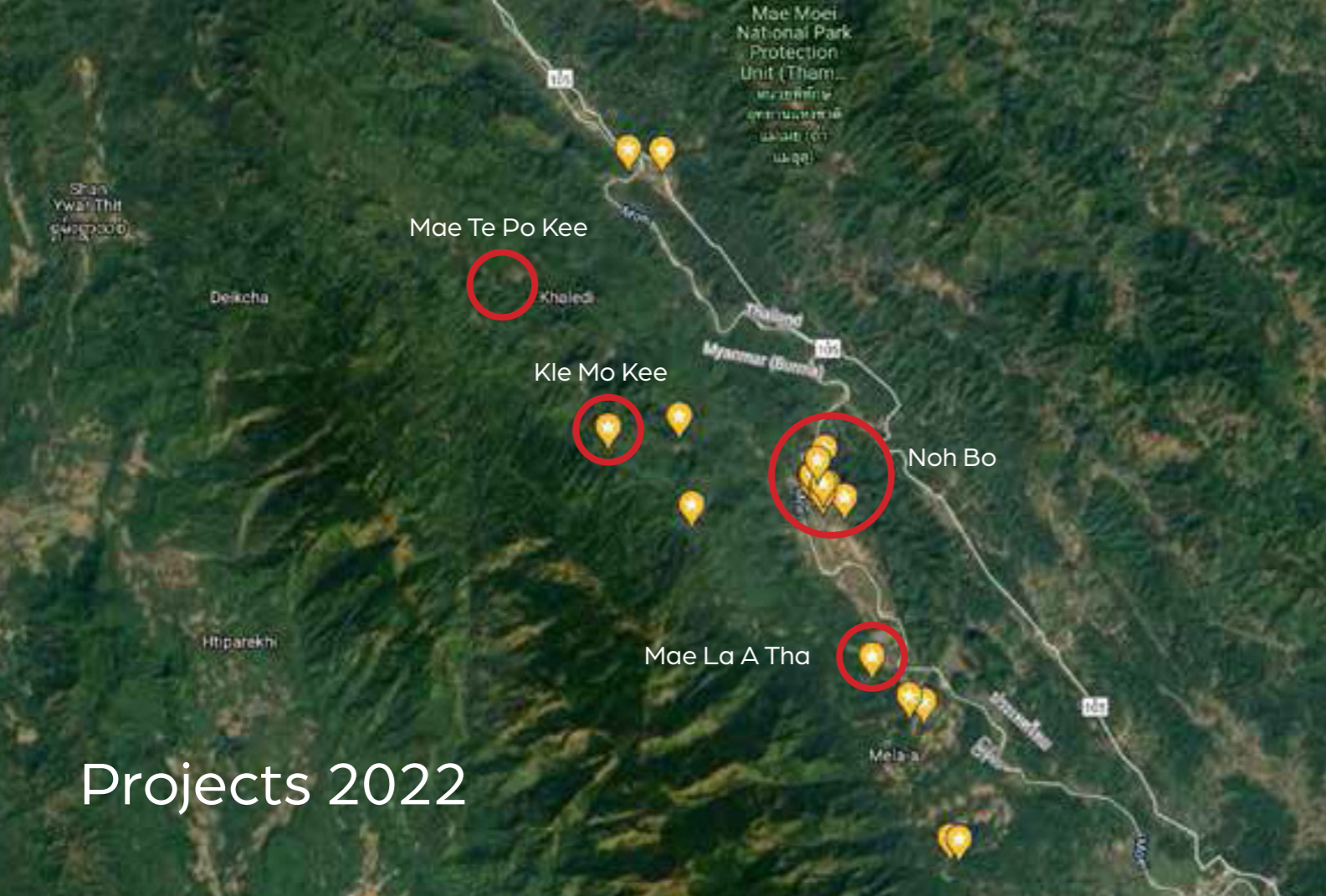


Noh Bo house

2021 / 4 weeks / 20 174 kr

When Covid hit a new wave and travel uncertainty due to the military coup kept us away from our planned projects, we decided to use our time to further expand our knowledge of braided bamboo. Line's Noh Bo home became a test site, and the result was the most beautiful walls ever and a technique we now use a lot in later projects.





Projects 2022

Mae La A Tha 2 classrooms

2021-2022 / 12 weeks / 100 933 kr

Some timber was bought in 2021.

In the village of Mae La A Tha, 7 classes shared a classroom and a new building was needed. The property was small and they had found a new location slightly outside where they wanted new classrooms to be located. These were designed and built for flexible use and with natural light and air flow that create good conditions for learning.



Mae La A Tha teacher house

2022 / 10 weeks / 66 315 kr

There was also a need for a place for teachers to live on the school's new property. The building contains rooms for the teachers, a library, toilets, and a washing area. The walls are designed to facilitate both natural light and air flow while ensuring a level of privacy. Different braiding techniques are used to respond to the different needs.



Rammed earth

2022 / 9 weeks / 63 076 kr

Tea Du Koh is one of the smallest and most remote villages we have worked so far. They had one classroom for all classes and no place for teachers. The teacher house have rooms that can be used for sleeping as well as storage, it also have a hangout space and an area for food preparations. We also built toilets and washing area nearby.



Wa Me Kla Classrooms

2022 / 9 weeks / 98 503 kr

Wa Me Kla had a fairly modern building with 2 classrooms, but it was made of poor materials and had partially fallen down. It was also very small, and the village needed a new building. They had found a suitable site a little outside the village and now have a new school building with 3 classrooms for flexible use and a hanging area in front for both teaching and play. And of course, toilets.



Comments to the economic results

When Covid hit, many organizations closed their operations and left the area. The building and tourist industry in Bangkok, Rangoon, and other places where Karen people from the villages are given illegal work, also shut down. The result was a significant loss in income for families relying on these family members monetary contribution.

With our robust and flexible organization and respected local position, we were able to adjust to the quickly changing situation and keep our work safely going. Vaccines were not available as in the west, and information was sparse. Rules were also changing quickly without any further explanation, so we kept local and chose to do projects where we did not need to travel, had the least contact with others and the most control of our work. It turned out to be a period of huge internal development, increased knowledge, finetuned craftsmanship, improved communication, and a high level of invention. All possible because of trusted support from our long-term sponsors. Our continuous work also gave hope to our village. Local leaders supported us and helped facilitate for our daily operations to be as much in line with national, regional, and local policies as possible, each level with rules that rarely coincided.

When the coup happened on February 1st, 2021, we got yet another obstacle to handle, but with steady leadership from Paw Eh Wah, a strong team spirit and continuous support from local leaders, villagers, and our team's family members, we kept going and still do. Economically, the biggest change has been that we have realized projects we had not planned for in our budgets. We have not spent more than budgeted but have reallocated funds from projects, that at the current state cannot be implemented, to projects that is also needed, and that actually can be built without putting our team and villagers in danger. Smaller improvements

in already completed projects have also been prioritized in this period.

We have also implemented projects that we normally would not have prioritized. In this case, a Team house in Paw Eh Wah's banana garden. A project that kept us going when everyone else shut down, and a project that thought us more than we could ever dream of. According to our rules, materials for buildings built on private properties, should be paid by the landowner. In this case, Paw Eh Wah. Our goal was to utilize only available materials and what nature could provide, but as Covid kept its grip around our society and the project moved on and became one of the most important and innovative projects ever, the economical load on Paw Eh Wah and her family became too big. Since this project was initiated by the team in common and the repercussions by closing down our operations would be undesirable, we came to a joint conclusion that some of the materials for the Team house should also be paid by Gyaw Gyaw.

And slowly, life have gone back to a sort of normal. The military presence is stronger and the political situation less predictable, so we need to be even more flexible and adjust at a quicker rate than before. Costs have also in general gone up. With our team's increased efficiency, we also implement more projects every year and thus use more materials. That also contribute to increased budgets.

After years of debates, we have finally also adjusted our salaries for the foreigners in our team. Equal pay has been one of the most successful principles within our team. It has been a huge contributor to the close and respectful cooperation across ages, educations, sexes, backgrounds, and nationalities that defines our team. To live of a Thai minimum wage in Norway and Germany is however not feasible and with Line in

Vormsund and Jae in Berlin, it has slowly emerged a need to take place into consideration for equal rights and opportunities to be fair.

As a volunteer organization, we can only pay limited salary. For 2022, the maximum amount is 70 000 NOK. HENT has once again understood the situation and seen the need and divided their support between Gyaw Gyaw and Line, so Line is able to run the organization from Norway. For 2020 and 2021, Line got 300 000 NOK, and for 2022 she got 150 000 NOK from HENT. Jae has worked with Gyaw Gyaw since 2016 and oversees architecture in our group. She has never requested salary, but for 2022 and forward, we have decided to pay her equal to German minimum wage for the time she spends on Gyaw Gyaw. Within the limit of 70 000 NOK of course, so we do not break the rules for volunteer organizations. Compared to our regular costs, this is a high rise in expenses, but it reflects the huge gap in income and living expenses between the different parts of the world and is a fact we need to take into consideration for our organization to be sustainable in the long run.

And all is possible because of the great support we get from our sponsors. Both HENT and Vestre had three-year contracts that expired in 2021. HENT renewed theirs and made it possible for Lines salary to be adjusted to her and Gyaw Gyaw's need through the coming period. Vestre decided not to extend their agreement in 2022 but has signalized a longer-term commitment from 2023. We have also had great support from Agraff, Baías, Jessheim Rotary klubb and private persons and received economic advice through pro-bono hours from Zynkron. All highly appreciated.

Budget and costs 2021

31.12.21

The same numbers are presented in NOK and THB

NOK = Norwegian Kroner

<u>Assets</u>	NOK Assets		
01.01.21 Bank Norway	1 020 177		
01.01.21 Bank Thailand	24 014		
31.12.21 Cash Thailand	6 077		
Total assets 01.01.2021	1 044 191		
<u>Corporate sponsors</u>	NOK Budget	NOK Income	
* HENT	200 000	200 000	100 %
Vestre	200 000	200 000	100 %
Baia	18 000	20 000	111 %
<u>Private sponsors</u>			
Regular donations	20 000	21 200	106 %
One time donations		60 000	%
Total sponsorships 2021	438 000	501 200	114 %
NOK Total assets and income 2021	1 482 191	501 200	34 %

<u>Projects 2021 (incl salary)</u>	NOK Budget	NOK Costs	
Teamhouse	0	46 407	
Kle Mo Kee Teachershouse	69 893	76 519	109 %
Tee Tu Gaw 2 Classroom	65 861	64 831	98 %
Tee Tu Gaw Teacherhouse	53 764	54 175	101 %
Joe's Dormitory - Toilets	0	20 174	%
Noh Bo house	0	20 177	%
Mae La A Tha 2 classrooms	94 087	2 823	3 %
Mae La A Tha Teacherhouse	64 517		0 %
Total projects	348 122	285 105	82 %

<u>Management Noh Bo</u>			
Office/Equipment	18 817	26 595	141 %
Salary management	26 882	24 463	91 %
Car	13 441	5 546	41 %
Support	10 753	41 893	390 %
Education Fund	8 065		0 %
Total management Noh Bo	77 958	98 496	126 %

<u>Management Norway/Germany</u>			
Office/Equipment	15 000	11 766	78 %
Salary architects	70 000	15 630	22 %
Planetickets projectmanagement/Workshop 2021			%
Total management Norway/Germany	85 000	27 396	32 %

NOK Total expences 2021	511 080	410 998	80 %
--------------------------------	----------------	----------------	-------------

	NOK Budget	NOK Result
NOK Result income - expences 2021	-73 080	90 202

Left for 2022	947 097	1 131 204
Valuta: 26,882		

* Total support 500 000 NOK, where 300 000 NOK is paid to Line Ramstad for her work for Gyaw Gyaw

Budget and costs 2021

31.12.21

The same numbers are presented in NOK and THB

THB = Thai Baht

<u>Assets</u>	THB Assets		
01.01.21 Bank Norway	3 795 018		
01.01.21 Bank Thailand	89 331		
31.12.21 Cash Thailand	22 607		
Total assets 01.01.2021	3 884 349		
<u>Corporate sponsors</u>	THB Budget	THB Income	
HENT	743 992		0 %
Vestre	743 992		0 %
Baia	66 959	74 399	111 %
<u>Private sponsors</u>			
Regular donations	74 399	78 863	106 %
One time donations		223 198	%
Total sponsorships 2021	1 629 343	1 864 445	114 %
THB Total assets 2021	5 513 692	1 864 445	34 %

<u>Projects 2021 (incl salary)</u>	THB Budget	THB Income	
Teamhouse	0	172 633	%
Kle Mo Kee Teachershouse	260 000	284 647	109 %
Tee Tu Gaw 2 Classroom	245 000	241 168	98 %
Tee Tu Gaw Teacherhouse	200 000	201 528	101 %
Joe's Dormitory - Toilets	0	75 047	%
Noh Bo house		75 056	%
Mae La A Tha 2 classrooms	350 000	10 500	3 %
Mae La A Tha Teacherhouse	240 000		0 %
Total projects	1 295 000	1 060 579	82 %

<u>Management Noh Bo</u>			
Office/Equipment	70 000	98 933	141 %
Salary management	100 000	91 000	91 %
Car	50 000	20 630	41 %
Support	40 000	155 840	390 %
Education fund	30 000	0	0 %
Total management Noh Bo	290 000	366 403	126 %

<u>Management Norway/Germany</u>			
Office/Equipment	55 799	43 769	78 %
Salary architects	260 397	58 144	22 %
Planetickets projectmanagement/Workshop 2021			%
Total management Norway/Germany	316 197	101 913	32 %

THB Total expences 2021	1 901 197	1 528 895	80 %
--------------------------------	------------------	------------------	-------------

	THB Budget	THB Result
THB Result income - expences 2021	-271 854	335 549

Left for 2022	3 523 164	4 130 567
Valuta: 26,882		

* Total support 500 000 NOK, where 300 000 NOK is paid to Line Ramstad for her work for Gyaw Gyaw

The same numbers are presented in NOK and THB

NOK = Norwegian Kroner

Assets

01.01.22 Bank Norway	1 134 344	
01.01.22 Bank Thailand + cash	5 054	
31.12.22 Cash Thailand		
Total assets 01.01.2022	1 139 399	

Corporate sponsors

	NOK Budget	NOK Income	
* HENT	350 000	350 000	100 %
BAIAS	20 000	28 000	140 %
Agraff		40 000	

Private sponsors

Regular donations	20 000	23 300	117 %
One time donations		21 000	
Eduaction Fund		47 875	
Total sponsorships 2022	390 000	510 175	131 %

NOK Total assets and income 2022	1 529 399	510 175	33 %
---	------------------	----------------	-------------

Projects 2022 (incl salary)

	NOK Budget	NOK Income	
Noh Bo home improvements	4 112	3 383	82 %
Kle Mo Kee improvements	27 413	3 477	13 %
Mae La A Tha 2 classrooms	82 239	98 110	119 %
Ti Tu Koh improvements	27 413	15 047	55 %
Mae La A Tha Teacherhouse	68 533	66 315	97 %
Gyaw Gyaw office		63 076	
Wa Me Kla 2 classrooms	82 239	98 503	120 %
Wa Me Kla teacherhouse	68 533	0	0 %
Holidaymoney, saved by the team		13 145	4 %
Total projects and holidaymoney	360 481	361 055	60 %

Noh Bo Management

Office	13 707	14 996	109 %
Salary management	41 120	42 833	104 %
Equipment	10 965	16 978	155 %
Car	16 448	20 855	127 %
Support	32 896	15 820	48 %
Education Fund	13 707	17 325	126 %
Total management Noh Bo	128 841	128 807	21 %

Norway/Germany Management

Office	15 000	10 982	73 %
Salary architects and contributors	70 000	50 087	72 %
Planetickets/accomodation projectmanagement	25 000	55 386	222 %
Total management Norway/Germany	110 000	116 455	19 %

NOK Total expences 2022	599 322	606 317	101 %
--------------------------------	----------------	----------------	--------------

	NOK Budget	NOK Result
NOK Result 2022	-209 322	-96 142

Left for 2023	1 042 888
Valuta: 27,413	

The same numbers are presented in NOK and THB

THB = Thai Baht

Assets

01.01.22 Bank Norway	4 137 980	
01.01.22 Bank Thailand + cash	18 438	
31.12.22 Cash Thailand	18 917	
Total assets 01.01.2022	4 156 418	

Corporate sponsors

	THB Budget	THB Income	
* HENT	1 276 766	1 276 766	100 %
Vestre	72 958	102 141	140 %
Baia		145 916	

Private sponsors

Regular donations	72 958	84 996	117 %
One time donations		76 606	
Education Fund		174 643	
Total sponsorships 2022	1 422 683	1 861 070	131 %

THB Total assets 2022	5 579 100	1 861 070	33 %
------------------------------	------------------	------------------	-------------

Projects 2022 (incl salary)

	THB Budget	THB Income	
Noh Bo Home Improvements	15 000	12 340	82 %
Kle Mo Kee improvements	100 000	12 682	13 %
Mae La A Tha 2 classrooms	300 000	357 895	119 %
Ti Tu Koh improvements	100 000	54 890	55 %
Mae La A Tha Teacherhouse	250 000	241 911	97 %
Gyaw Gyaw office		230 095	
Wa Me Kla 2 classrooms	300 000	359 331	120 %
Wa Me Kla teacherhouse	250 000	0	0 %
Holidaymoney, saved by the team		47 950	4 %
Total projects and holidaymoney (% of total expences)	1 315 000	1 317 094	60 %

Noh Bo Management

Office	50 000	54 704	109 %
Salary management	150 000	156 250	104 %
Equipment	40 000	61 935	155 %
Car	60 000	76 077	127 %
Support	120 000	57 710	48 %
Education fund	50 000	63 200	126 %
Total management Noh Bo	470 000	469 876	21 %

Norway/Germany Management

Office	54 719	40 063	73 %
Salary architects and contributors	255 353	182 711	72 %
Planetickets/accomodation projectmanagement	91 198	202 041	222 %
Total management Norway/Germany	401 269	424 815	19 %

THB Total expences 2022	2 186 269	2 211 785	101 %
--------------------------------	------------------	------------------	--------------

	THB Budget	THB Result
THB Result 2022	-763 587	-350 715

Left for 2023	5 929 816
Valuta: 27,413	

Prospects 2023

With more than 60 years of civil war in our area, flexibility, trustful sponsorships, and close local collaborations have been vital for our successful operations. It has made it possible for us to build sustainable architecture and work for a democratic development in a war-torn area. All on local terms, securing a high level of safety for both our team and our local partners.

Huge challenges like Covid and the military Coup has been additional obstacles that we of course would have wished for never to happen. The consequences are devastating for the society around us, and it effects our work and daily life. Our diligence and persistence in this period, has however been praised by local villagers, stakeholders and other collaborative partners that now support our work even more than before.

This period of development, and personal and collective growth, have also broadened the positive impacts for the schools and villages we cooperate with. We are on a steady path and will keep our continuous development for the years to come. Building sustainable architecture for and with the future users and their environment in manners that also strengthen their local communities.

It is time to talk about it! To share from our experiences and to a bigger extent participate in the global discourse around architecture and development.

For the next year, Line will collect and systemize the knowledge and experiences gained since 2009 with the goal of making it easier and better available for a larger audience. The first step will be a new webpage, all with superb help from the team, our board and Maiken Johansen and Kristine Oftedal Iversen from HENT.

Line is also chosen to be one of next year’s Loeb fellows at Graduate School of Design at Harvard University. A unique opportunity given her because of the incredible work done by Gyaw Gyaw as a group. All made possible thanks to highly valued support from our long term and trustfully committed sponsors.

To everyone who follow and support our work, **thank you!**





Gyaw Gyaw